

COMBINED PRODUCTION SALE

SUNDAY 24TH AUG 2014

Inspections from 9am

Auction Commences 12pm

BUYER INFORMATION

- LOCATION:** On farm at Alpha Centauri Alpacas. 1628 Coolalie Road Jerrawa NSW 2582
Using a GPS: If you are using a GPS, Google Maps etc. to locate us we advise using Jerrawa as the location for your search and not our actual address. Past experience indicates that using our address will direct you via Yass township and then out to us via 16km of dirt road.
- INSPECTIONS:** From 9am on day of Auction
- AUCTION START:** 12 noon on day of Auction
- CATERING:** Tea, coffee, cold drinks and light refreshments will be available on the day.
- REGISTRATION:** All prospective buyers must register with Landmark at the Buyer Registration Office on site prior to the auction. Terms are strictly cash unless prior arrangements have been made with the auctioneers.
- DELIVERY:** Will be at the conclusion of the sale. All Lots are to be removed from the Auction venue at the conclusion of the auction unless prior arrangements have been made.
- AGISTMENT:** Free Agistment will be available at both studs after the auction for a period of 7 days. Agistment after this time will be by arrangement with each stud.
- TRANSPORT:** Buyers should make their own transport arrangements prior to the auction.
- HEALTH:** Animals carry the following health status:
Alpha Centauri Alpacas, QAlpaca (08/0281) Lillyfield Alpacas, MN3 NA13016
Both studs are located in a **BLUE TONGUE FREE ZONE**
- AAA TRANSFERS:** All transfers are at the purchasers expense.
- FLEECE STATS:** All fleece information provided in this catalogue is taken from fleece testing data provided by Southern Tablelands Fibre Testing (STFT).
- HEALTH PROTOCOL:** Buyers, please ensure that you are aware of the necessary State Health Protocol requirements at the destination of your purchase.
- TERMS & CONDITIONS:** All stock is offered under standard terms and conditions. These are available from the Auctioneers and are displayed around the Auction Venue. .
- TERMS OF PAYMENT:** Terms of payment are strictly cash at the conclusion of the auction in accordance with the conditions of sale. Personal and Business cheques accepted by prior arrangement with the Auctioneers. Overseas purchases must be paid for in Australian \$ at the conclusion of the auction. For further info contact Landmark—Andrew Wishart 0407 424 706 or Wilson Beer 0428 505 520
- GST:** GST applies to all lots (with the exception of Lot 32) & will be charged on top of bid price i.e. \$1500 + \$150 GST.
Note: GST does not apply to purchases made by overseas buyers.
- TELEPHONE BIDDING/
BUYER ORDERS:** Buyers orders can be placed with Landmark Personnel who will be in attendance on auction day. Telephone bidding, both national and international, will be available on the day and should be arranged NLT 4pm Thurs 21 Aug contact Landmark—Wilson Beer 0428 505 520
- CATALOGUES:** All details in this catalogue are provided by the Vendors and whilst all care has been taken in their preparation the vendors accept no responsibility for errors or omissions herein. Additional catalogues are available online at www.alpacas.com/sales a limited number of printed catalogues will be available at the venue but buyers are encouraged to print their own copy prior to the sale.
- ACCOMMODATION:** There are many hotels and motels available in Yass.
For details contact the Yass Visitor Information Centre during business hours on 1300 886 014 or visit <http://www.yassvalley.com.au/accommodation.aspx>

LOCATION AND CONTACT INFORMATION



Andrew and Bronwyn Munn

1628 Coolalie Rd, Jerrawa NSW 2582

Bronwyn 0408 410 280

Andrew 0408 410 281

Email: info@acalpacas.com

Web: www.acalpacas.com



Carolyn Austin and Geoff McGowan-Lay

69 Graces Flat Rd, Bowning, NSW 2582

Carolyn 0410 693 802

Geoff 02-6227 6224

Email: lillyfield@bigpond.com

Web: www.lillyfield.com



Wilson Beer 0428 505 520

Andrew Wishart 0407 424 706

Ray Attwell 0428 836 136

FAX 03-5482 2750

Auction to be conducted on farm at Alpha Centauri Alpacas

Coolalie Road



1 km

Jerrawa Road 4.5 km

Yass 20 kms

Goulburn 60 kms

Hume Highway

VENDOR INFORMATION



ALPHA CENTAURI ALPACAS



Alpha Centauri Alpacas is a multi-award winning stud established in 2002 and is a current member of the Australian Alpaca Association Ltd. We are located on 400 acres at Jerrawa, near Yass in Southern New South Wales.

By careful selection of alpacas with exceptional genetic backgrounds we produce quality alpacas with breeding predictability and sound conformation, growing a distinctive fleece which is highly sought after in both the breed and commercial fleece industries. For us, alpacas are not just a business but a way of life and we enjoy the enormous amount of pleasure and reward that comes with owning, managing and breeding these beautiful and intelligent animals.

Many of our alpacas in this catalogue or show stock or show quality stock from some of our best bloodlines. We hope you find something within the following pages of interest to add to your own herd and breeding programme



Most Successful Huacaya Fleece Exhibitor

Sydney Royal Easter Show

2011 2012 2013 2014

Most Successful Huacaya Exhibitor of Show

Sydney Royal Easter Show

2011 2012 2013



LILLYFIELD ALPACAS



At Lillyfield we strive to produce both a commercially viable animal, but also an aesthetically pleasing animals. They need to have fleece that is wanted by manufacturers and a frame that makes them hardy enough to thrive in the sometimes challenging Australian environment.

We do have a soft spot for fawns as you see below, but we also have SUPREME Champion Whites & Championship winning blacks, the genetics are there to produce Champions time & time again in all colours.

So density, fineness, evenness, predictability, vigour—all the things required of a successful Lillyfield animal—your are welcome to come along on our journey



REFERENCE SIRES

ELYSION JUPITER



Solid White Male

IAR 94339

DOB 17/03/2006

Sire: Benleigh Lorimer

Dam: Benleigh Jubilation

- 11 x Halter **SUPREME CHAMPION**
- 20 x Halter **CHAMPION**
- 2 x Fleece **CHAMPION**
- 5 x Halter Reserve **CHAMPION**
- 1 x Fleece Reserve **CHAMPION**
- 10 x 1st Sires Progeny (incl 2014 Sydney Royal)

Sire of Lots: 1 9 16 24 34 37 42

Mated to Lots: 25

Jupiter's 8th fleece
2013 Shearing



Jupiter joined Alpha Centauri Alpacas in 2011 after catching our attention with the exceptional brightness, density and structure of his fleece which is all packed on a great sturdy frame. This elite stud sire has an impressive show career and is an 11 time Supreme Champion. His ability to pass on his fleece characteristics and frame to his progeny has been proven in the show ring with 4 of his progeny being awarded Supreme Championships (ElySION Apollo, Elitealpaca Carliah, Elitealpaca Jalana and Alpha Centauri Kommissar) Jupiter has also sired over 32 Champion and 20 Reserve Champion ribbons in 3 short years of showing his progeny. Jupiter has been awarded 26 ribbons in Sires Progeny with 10 of those being 1st place. Jupiter took over the reigns from our foundation stud males - Shanbrooke Society Class Act and Woodland Chase Milagro. This high impact male is exceptionally well regarded and is deserving of his reputation as a stud sire of choice in the Australian Alpaca industry. Jupiter's ability to replicated himself time and time again is amazing.

ALPHA CENTAURI KOMMISSAR



Solid White Male

IAR 173043

DOB 04/02/2011

Sire: ElySION Jupiter

Dam: Alpha Centauri Keoney

- **SUPREME CHAMPION** - Bathurst Royal 2014
- 4 x Halter **CHAMPION**
- 5 x Halter Reserve **CHAMPION**

Mated to Lots: 16 31 36 40 41



Kommissar is an outstanding example of the cream of our breeding program. He is the culmination of great genetics which contain Benleigh Lorimer, Benleigh Bellissimo and Jolimont Conquistador. He is a near carbon copy of his elite sire ElySION Jupiter and carries all his fantastic qualities. He is highly awarded at all levels of showing including Royal and Regional level. He has been awarded Supreme Champion at the 2014 Royal Bathurst Show. Since a cria he has been affectionately known as 'The Little Lamb' due to his dense greasy fleece, chunky frame, skin rolls galore and the soft, silky rolls of skin across his nose. Kommissar has an extremely dense fleece which opens like a book and is bright white with an even highly aligned crimp structure. We have used Kommissar extensively in our breeding program. All of his offspring are showing the traits for which Kommissar is known. Brilliant brightness, density, high frequency crimp with a high degree of curvature.

REFERENCE SIRES

ALPHA CENTAURI COMANCHEE



Light Fawn Male

IAR 162809

DOB 11/03/2010

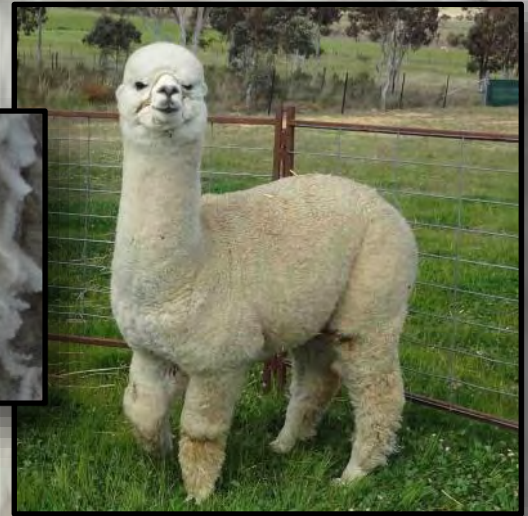
Sire: Woodland Chase Milagro

Dam: Alpha Centauri Shanoa

- 4 x Halter CHAMPION
- 1 x Halter Reserve CHAMPION
- 2 x Fleece CHAMPION
- 1 x Fleece Reserve CHAMPION
- 2 x BEST LIGHT FAWN Fleece

Mated to Lots: 5 27 42

Comanchee has a knockout pedigree which includes EP Cambridge Peruvian Maximus, Adori Accoyo Altaz, NWA Ltd Ruffo & Jolimont Warrior. His sire Woodland Chase Milagro and dam Alpha Centauri Shanoa have both had extensive show careers and Comanchee has followed in their footsteps. Shanoa is one of our best and consistent breeding females. His fleece was awarded Champion 30-48 mths Light Fawn at Sydney Royal 2013 and Reserve Champion 30-48 mths White at the AAA National Show 2013. Comanchee is a well grown male with a 'look at me' attitude and great conformation. He has a dense fleece which displays a highly aligned, deep and bold crimp. We have used Comanchee extensively in our breeding program since his certification. He has 2 stunning male cria born so far and we are excited to see the many more cria he has due in the 2014/2015 birthing season.



BEDROCK SENTINEL



Light Fawn Male

IAR 155311

DOB 21/04/2009

Sire: Blue Grass Centurion

Dam: Windsong Valley Summer Snow

- **SUPREME CHAMPION LIGHT FAWN**
- SNSWR Colourbration 2012
- 4 x Halter CHAMPION
- 7 x Halter Reserve CHAMPION
- 1 x Fleece CHAMPION

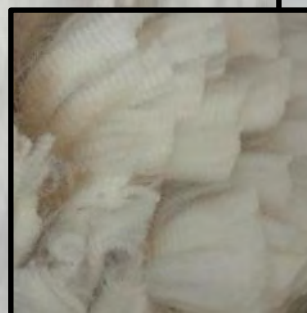
Sire of Lots: 11 12 18 19 25

Mated to Lots: 6 30

Sentinel has an enviable pedigree with Blue Grass Centurion, Jolimont Warrior, Jolimont Conquistador & Purrumbete Ledgers Dream, that's just on his sire's side. On his dam's side is Windsong Valley Summer Snow and Peruvian Sonoma.

He has had an extensive show career and has been placed well at National, Royal and Regional level. He was awarded Supreme Champion Light Fawn at the Southern NSW Region Colourbration in June 2012. His fleece has been awarded Champion 18-30 mths White at the Sydney Royal 2012 and a 1st 12-18 mths Light Fawn at the AAA National Show in 2011.

He is a good natured male sporting a stocky, strong frame, a very dense fleece with highly aligned, high frequency crimp.



REFERENCE SIRES

ALPHA CENTAURI OUTLAW



Solid White Male

IAR 79972

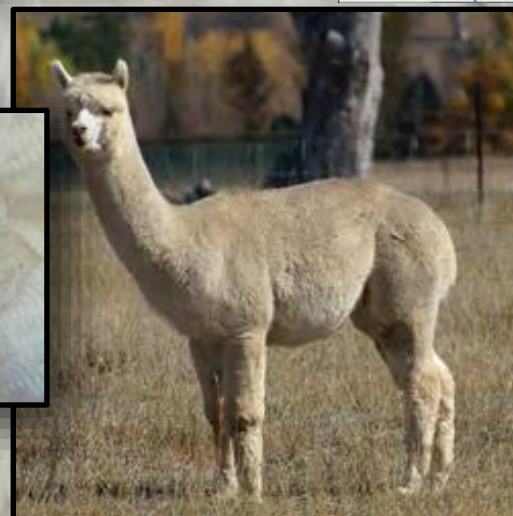
DOB 01/01/2006

Sire: Adori Accoyo Altaz

Dam: Molongo Xuanzong

- 1 x Halter CHAMPION
- 1 x Halter Reserve CHAMPION

Mated to Lots: 24



Outlaw is an unassuming male but his progeny have certainly proved themselves in the show ring. Three of his female progeny have been awarded Championships - Alpha Centauri Delainey awarded Champion Mature Female (Bathurst Royal 2014) and Champion Senior Female (Canberra Royal 2012), Elitealpaca Palila awarded Champion Junior Female (Canberra Royal 2013) and Alpha Centauri Shamara awarded Champion Junior Female (Bathurst Royal 2014). Alpha Centauri Berenger awarded 1st Junior Male at both the CW Region Show and Vic Colourbration in 2010. Delainey has also been awarded Reserve Champion 48-60 mths White Fleece at the Sydney Royal 2014 and Reserve Champion 18-30 mths White Fleece at the AAA National Show in 2012.

Since birth he has had an extremely bright, greasy fleece and is passing these traits onto his progeny. We now know the progeny of this male works well with Jupiter and have some stunning cria as a result.

ALPHA CENTAURI VYPER



White Male

IAR 134876

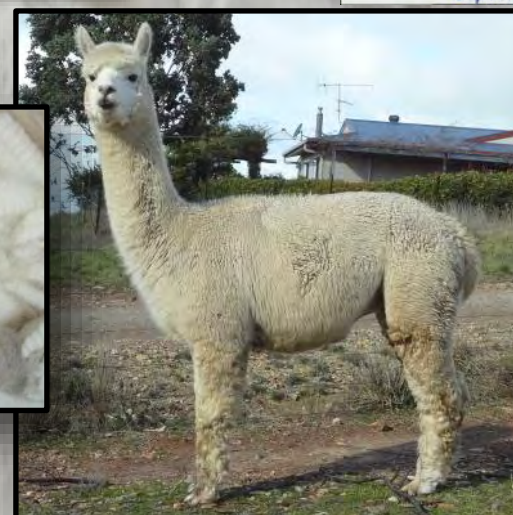
DOB 09/08/2007

Sire: Shanbrooke Society Class Act

Dam: Molongo Xuanzong

- 2 x Halter CHAMPION
- 2 x Halter Reserve CHAMPION

Sire of Lots: 6 13 22 41



Vyper is a compact male with a dense, crimped fleece. He was awarded Champion Junior Male at the Sydney Royal and Hawkesbury Shows in 2008. Vyper is the best of our Class Act breeding and has taken over from his exceptional stud sire in our breeding programme.

Vyper sires progeny with exceptional density and lack of medullated fibre. He has produced outstanding results when joined to Jupiter progeny. He consistently produces colour when joined to coloured dams.

REFERENCE SIRES

WYTERRICA JOHN BOY



Solid Black
IAR 42307
DOB 06/02/2000
Sire: Monara Park Mackinnon
Dam: Wyterrica Sophia

- 1st Senior Black Male - Sheep & Wool Show 2002
- 2nd Senior Black Male - AAA Nationals 2001
- 2nd Junior Black Male - Shepparton AG 2000
- 4th Junior Black Male - Royal Melbourne 2000

Sire of Lots: 27 30 35



Johno is one of the best known Black stud sires in Australia. At over 14 years of age this wonderful male is still producing the quality of cria that we look for. His offspring perform exceptionally well when shown against the progeny of much younger coloured stud sires.

John Boy was purchased by us in 2009 because of his Black dominance. With over 90% of his progeny being black, even when mated to light coloured females. We have used Johno with some of our best white and light fawn females and these pairings have produced outstanding black and dark brown cria.

ALPHA CENTAURI ADDIXION



Solid White
IAR 173050
DOB 19/03/2011
Sire: Alpha Centauri Vyper
Dam: Alpha Centauri Adeliah

- CHAMPION 30-48 months Fleece
Sydney Royal 2014

Mated to Lots: 34



Addixion is the new kid on the block. Whilst he hasn't been shown much during his career he has the fleece qualities that we want to inject into our breeding program. Since a cria he has had an extremely heavy, greasy fleece with an exceptional deep and bold crimp along with a long staple length.

We have used him sparingly in matings but he is now getting the pick of the bunch from our elite females. We eagerly await his first cria at the end of 2014.

He has recently been awarded Champion 30-48 mths White Fleece at Sydney Royal 2014.

REFERENCE SIRES

BLUE GRASS BOLLINGER



Light Fawn Male

IAR: 38765

DOB: 01/05/2000

Sire: Benleigh Ringleader

Dam: Purumbete Vanilla

- CHAMPION Junior Male, Berry Show 2001
- SUPREME Champion, Berry Show 2001
- CHAMPION Junior Male, Canberra Show 2001
- SUPREME Champion, Canberra Show 2001
- 1st Intermediate Fawns, National Show 2001
- CHAMPION Senior Male, Canberra Show 2002.



Bollinger comes from some of the famous genetics yet known; he has Inti & the famous Purumbete Sweet Freedom on his sire's side with Ledgers Dream and Purumbete Exquisite on his dam's side. His dam Purumbete Vanilla is also the dam of Blue Grass Leading Lady & Blue Grass Centurion both multiple Supreme champions and with a number of other award winning progeny.

This male can produce Champions in all colours and is the mainstay of our herd: Bollinger still retains well defined high frequency crimp at 14 years of age, he is still incredible dense with the amazing bone.

In his day he was a real ground breaker & continues to impact alpaca breeding all over the world.

Bollinger has progeny in the UK, Ireland, France, Germany & South Africa—and some we probably don't even know about.

FORESTVIEW PRINCE OF THIEVES



Solid White Male

IAR: 62566

DOB: 04/04/2004

Sire: Jolimont Alessio (Sculptor)

Dam: Blue Grass Choisi (Warrior)

- 1st & CHAMPION Junior Male - Bega 2005
- SUPREME - Bega 2005
- 1st & RESERVE CHAMPION Junior Male - Boorowa 2005
- 1st & RESERVE CHAMPION Intermediate Male - Hawkesbury 2005
- 1st & RESERVE CHAMPION Intermediate Male - Mudgee 2005
- 1st & CHAMPION Intermediate Male - Charles Ledger 2005
- 1st & RESERVE CHAMPION Adult Male - Wodonga, Hawkesbury &



Prince of Thieves is an exceptional Macho with incredible density, fine pencilling and extreme lustre. He is a **Full Barreda male**. This male has already made a deep and lasting impression on the stock here at Lillyfield. A fabulous mix of Sculptor & Warrior genetics, with a greasy well nourished fine pencilling fleece on a deep frame.

Multiple champions in his drops and now **4 x SUPREME - SONS** & now 1 Supreme Grandson; what else can we ask for.

His grandchildren & great grandchildren are now winning championships as well. A true testament to the value in the genetics this male has. We see lustre, length & a fabulous nourishment in his cria that is hard to beat with a fineness that holds for years - he is a true improver. He has won so many Sires Progeny first I cannot fit them in!

REFERENCE SIRES

LILLYFIELD ALCHEMY



Solid White Male

IAR: 130481

DOB: 27/11/2007

Sire: Jolimont Warrior

Dam: Brabant Fairy-Jane

- 1st & CHAMPION ADULT MALE - Crookwell 2010
- 2nd & RESERVE CHAMPION ADULT MALE - Bega 2010
- 2nd Adult Male White - Wodonga 2010
- 2nd Adult Male White - Goulburn 2010
- 1st Adult Male White - Hawkesbury 2010
- 1st & CHAMPION Senior male - Boorowa 2011
- 1st & RESERVE CHAMPION Senior Male - Wodonga 2011



Fabulous herd sire displaying all the best of his famous sire Warrior and the maintaining the fineness of his fabulous multi championship winning dam Fairy-Jane.

His 1/2 brother to Lillyfield Scorerer (multiple SUPREME Champion) from the same dam—Fairy-Jane.

He is a very willing worker who is sure to improve, with an excellent frame, well boned with a uniform soft lustrous fleece.

Alchemy is a real surprise, his cria are now in the show ring & winning - we could not be happier with the impact this male is having and we believe the best is yet to come.

EP CAMBRIDGE OBLIVION ET



Solid White Male

IAR: 157146

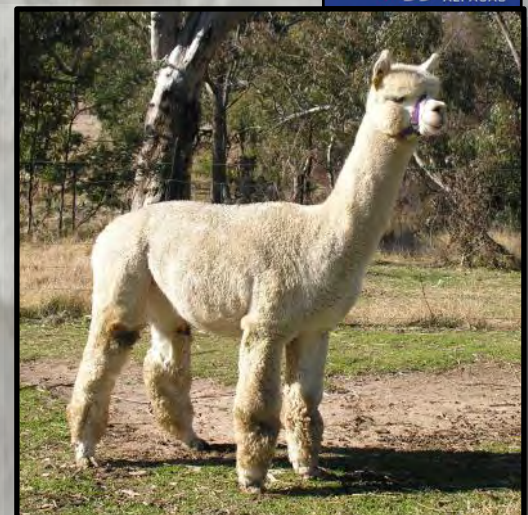
DOB: 20/04/2009

Sire: Jolimont Commissario

Dam: EP Cambridge Illustrious (Ruffo)

Oblivion is a rare chance to get your hands on Commisario genetics with a lovely touch of Ruffo thrown in he has incredible bone & depth of frame—with low levels of modulation across a handsome body.

From the cria on the ground & our mating's he fits well with both Bollinger & Prince of Thieves daughters



Oblivion is a very well balanced male with incredible substance of bone from the best of the best Cambridge bloodlines

His Dam Illustrious is a real "STAR" and one of Cambridge's best females, she was Adult Champion Female at the National Show & 1/2 sister to the famous "Sculptress" - both have the impeccable genetics of Ruffo in their background.

His sire Commissario is only available In-House so Oblivion is a real opportunity to get at exclusive genetics. He is an outstanding macho with a fabulous frame and exceptional density producing a bright fleece- hand selected by Matthew & Cathy from the Accoyo Herd. The crias on the ground to date are all well balanced, dense and vast improvements over their dams & 90% female.

REFERENCE SIRES

LILLYFIELD UP THE ANTE



Solid Dark Fawn Male
IAR: 175513
DOB: 29/03/2011
Sire: Blue Grass Bollinger
Dam: Lillyfield Matilda

- 1st Junior Male Gunning & Royal Canberra 2012
- 1st & CHAMPION Junior Male Wodonga 2012
- 1st & RESERVE CHAMPION Intermediate Bathurst 2012
- 1st Intermediate Male Charles Ledger 2012
- 1st Adult Gunning & Royal Canberra 2013
- 1st Adult Boorowa & Royal Canberra 2013
- 1st & RESERVE CHAMPION Adult Goulburn 2013



A stunning Bollinger son from our very best female Lillyfield Matilda.

He is bred to win with all of the magic numbers in his background—he has been successfully show Junior through to Senior grades—in both led & fleece classes.

Up the Ante is an amazing male with impeccable pedigree, he is full brother to the UK sire Lillyfield Jack of Spades & Spades are Trumps and his sire and dam are both the most remarkable stock - the very best of what we have on farm.

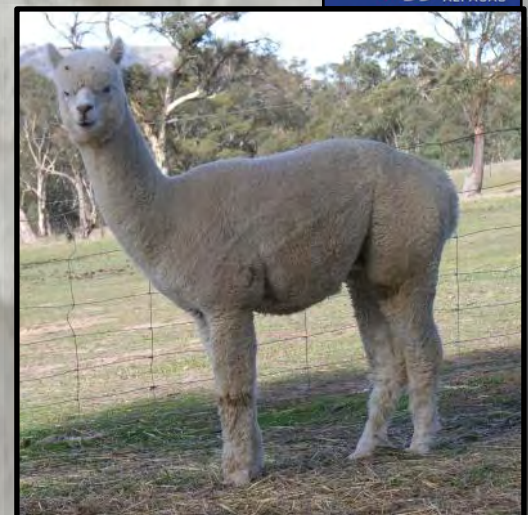
This young certified male is a great worker, achieving high levels of pregnancies from a single mating & we look forward to his progeny, should you be lucky enough to successfully bid on any of his girls that carry an Up The Ante cria—I am sure you will not be disappointed.

LILLYFIELD SCORCERER



Solid White Male
IAR: 158255
DOB: 17/10/2009
Sire: Forestview Prince Of Thieves
Dam: Brabant Fairy Jane

- 1st & RESERVE CHAMPION Intermediate Male - 2011 Bega Show
- 1st & CHAMPION Intermediate Male & **SUPREME** - 2011 Goulburn
- 1st & CHAMPION Adult Male - 2011 Western Region Show
- **BEST WHITE & SUPREME** - 2011 Western Region Show
- 1st & CHAMPION Senior Male - 2013 Royal Canberra & Gunning
- 1st & CHAMPION Senior Male - 2013 Boorowa Show
- 1st & CHAMPION Senior Male - 2013 Goulburn Show & Wodonga



Again a stunning Certified Prince of Thieves son - with beautiful fleece structure, great depth of frame and a fabulous nature. His fleece is well structured very dense and has brightness that is very pleasing to the eye, with just a touch of lanolin. He has been highly successful in the show ring.

This boy is a charmer, easy to handle works well & he has cria on the ground.

The cria are fabulous, incredibly dense, full of lustre & style with great bone—a really bright fleece just like dad—they will certainly be in the Lillyfield Show Team next season—bit little at the moment.

REFERENCE SIRES

LILLYFIELD NUREYEZ



Solid White Male

IAR: 130493

DOB: 26/03/2008

Sire: Forestview Prince Of Thieves

Dam: Wongadene Coppelia

- 1st Junior Male White - Bega 2009
- 2nd Junior Male White - Canberra 2009
- 2nd & RESERVE CHAMPION JUNIOR MALE - Boorowa 2009
- 2nd Junior Male White - Goulburn 2009
- 3rd Intermediate Male White - Sth Region Show 2009
- 1st & CHAMPION ADULT MALE - Boorowa 2010
- 1st & RESERVE CHAMPION ADULT MALE - Goulburn 2010



Nureyev is the first of the Prince Of Thieves sons to be certified—although certainly not the last. He was shown successfully from Junior through to Adult classes, he is a fabulous male, having a huge impact on females. He has exceptional fleece length and density, with amazing lustre across a compact, yet deep frame. He carries a true pile of fleece—even his neck fleece is of commercial length .

He is a dynamic young male with high levels of pregnancies with a single mating. The cria are on the ground and an example is in this catalogue - so you can see improvements he is making over the dams with a fabulous look & improved density - he is producing a consistent type.

He is one of the farm favourites, producing cria with an easy going manner.

ELYSION LOCHINVAR



Solid White Male

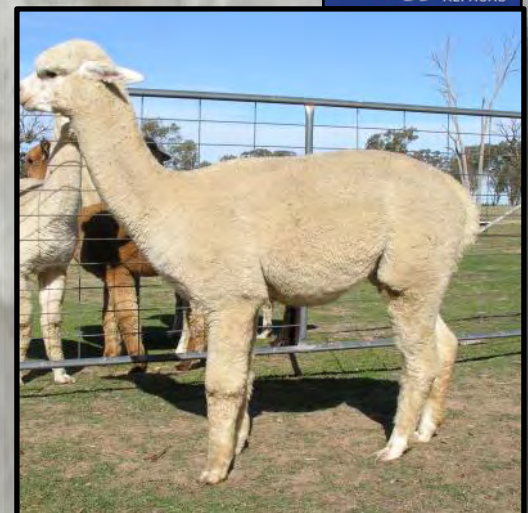
IAR: 154448

DOB: 03/02/2009

Sire: Benleigh Lorimer

Dam: ElySION Eleanor

- 1st & CHAMPION Royal Canberra, Castle Hill & Hawkesbury 2010
- 1st, CHAMPION & **SUPREME** Boorowa 2010
- 1st, CHAMPION & **SUPREME** Goulburn 2010
- 1st & CHAMPION Bega, Wodonga & Goulburn 2011
- 1st, CHAMPION, BEST WHITE & **SUPREME** Boorowa 2011
- 1st & RESERVE CHAMPION Wodonga 2013



This male has an impressive show history & an even more impressive fleece on his body. The cria to date are all a lovely improvement over the dams, we have only just really started using him, but the results are very pleasing and he is sure to get a lot of work in the next season. Lochinvar is another highly successful Benleigh Lorimer son; we bought him some time ago and he has been extensively in our Show Team with great success - 3 Supreme Championships. Lochinvar is a well balanced highly crimped, dense, fine and even male with exceptional brightness - he is a finisher male for your better females adding more definition to crimp style.

Lot 1

ALPHA CENTAURI NALAH



Light Fawn Huacaya Female

IAR 184081 • DOB 06/12/2013

Benleigh Lorimer

Brabant Chieftain

Sire: ElySION Jupiter

Dam: Brabant Natasha

Benleigh Jubilation

Brabant Trudy-Ann

Fleece Stats

2014: 18.1 mic, 3.4 SD, 100% CF

Nalah's sire is our 11 time Supreme Champion stud ElySION Jupiter. She has a very bright, dense, highly aligned crimped fleece on a good frame. Nalah is show quality and will be ready for mating early in the new breeding season.

Nalah was shorn as a cria on the 31/12/2013.

Unjoined



Suggested Covering Sire
Alpha Centauri
Comanchee

Nalah Fleece
2014

Lot 2

ALPHA CENTAURI BARBEE



Medium Fawn Female

IAR 184100 • DOB 09/02/2014

Shanbrooke Society Class Act

Shelbory Park El Cid

Sire: Alpha Centauri Tanner

Dam: Xanadu Barbarella

Alpha Centauri Sienna

Golden Fleece Century

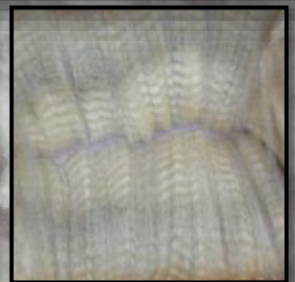
Fleece Stats

2014: 18.8 mic, 4.6 SD, 100% CF

Barbee is a cute little female with a very expressive fleece. She exhibits a high frequency, nicely bundling fleece with a long staple length. Her Dam has always breed offspring with high quality fleece and has been very capable of producing colour.

She would be an asset to a any coloured / fancy / appaloosa breeding program.

Unjoined



Barbee
June 2014

Barbee Fleece
2014

LILLYFIELD PIT CREW



Solid Light Brown Huacaya Male

IAR 189246 • DOB 30/04/2013

Forestview Prince of Thieves

Blue Grass Bollinger

Sire: Lillyfield Nureyez

Dam: Lillyfield Sweet Succession

Wongadene Coppelia

Blue Grass Camille

Fleece Stats

2013: 18.8 mic, 4.3 SD, 99% CF

Pit Crew is a very attractive young male from a highly desirable background. His dam was a highly awarded show girl & his sire is a multiple Championship winning male, who regularly produces quality, fine & extremely long fleeced cria.

Pit Crew has won many ribbons since starting to be shown and has a fabulous temperament, like his sire.

His fleece is extremely long, very lustrous and grows in a medium amplitude blocky crimp style.

He comes with full fertility & certification guarantee .



Pit Crew

Pit Crew 2014

LILLYFIELD MYKYTA



Light Fawn Huacaya Female

IAR 189251 • DOB 29/10/2013

Forestview Prince of Thieves

Blue Grass Bollinger

Sire: Lillyfield Nureyez

Dam: Lillyfield Nikitta

Wongadene Coppelia

Lillyfield Nikiya

Fleece Stats

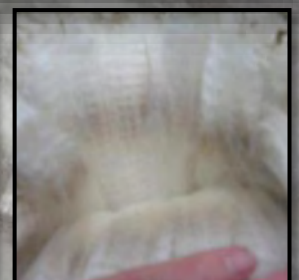
2014: 19.5 mic, 4.1 SD, 98% CF

Mykyta is a very attractive compact young female, with excellent fleece length, a lovely soft handling fleece and some beautiful character development starting to happen in that fleece. She has an excellent frame with a deep body.

She comes from a highly fertile family of girl producers, so we are confident she will go on to be a fabulous breeding female.

Halter Trained & Comes with full fertility guarantee

Unjoined



Suggested Covering Sire
Lillyfield Up The Ante

Mykyta Fleece June 2014

ALPHA CENTAURI MAHICA



Dark Fawn Huacaya Female

IAR 162804 • DOB 19/02/2010

Shanbrooke Accoyo El-Prado

NWA LTD Don Juan

Sire: Shanbrooke Society Class Act **Dam:** Molonglo Upto Nogood
Shanbrooke Society Lass Molonglo Ranita

Fleece Stats

2013: 25.9 mic, 4.9 SD, 100% CF

Mahica is a compact female with El-Prado and Don Juan in her pedigree. She is a fantastic, protective mum and gives birth easily. She is currently pregnant to Comanchee and should produce a cria of both colour and quality. She is one of only four females in the auction mated to Comanchee. It is very rare that we offer Class Act sired females for sale.

Currently pregnant to Alpha Centauri Comanchee LMD 10/03/2014



Covering Sire
Alpha Centauri
Comanchee



Mahicas's Daughter
Myranda

ALPHA CENTAURI DHANISHTA



Medium Fawn Female

IAR 184052 • DOB 28/03/2013

Shanbrooke Society Class Act

Woodland Chase Milagro

Sire: Alpha Centauri Vyper **Dam:** Elitealpaca Dieudonne
Molonglo Xuanzong Xanadu Stunning Symphony

Fleece Stats

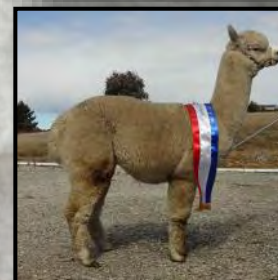
2013: 16.4 mic, 4.2 SD, 100% CF

Dhanishta has a beautiful honey coloured fleece which is very soft handling and displays medium frequency crimp structure throughout her saddle. This is another female with a very fine fleece that paired with Sentinel should give a pleasing result. A stunning coloured female from the best that our breeding has to offer.

Currently pregnant to Bedrock Sentinel LMD 01/05/2014

Show Results

5th 6-12 mths M/D Fawn Fleece - Sydney Royal Show 2014



Covering Sire
Bedrock Sentinel



Dhanishta Fleece
2014

Lot 7

JARRACK PARK FELICITY



Solid White Huacaya Female

IAR 55111 • DOB 18/03/2004

Jolimont Conquistador

Jolimont Romeo

Sire: Jolimont Warrior

Dam: Jarrack Park India Rose

Jolimont Marilu

Regal House Rose

Fleece Stats

2013: 22.2 mic, 4.2 SD, 93% CF

Felicity is now a 10 year old Warrior daughter—seems amazing he would have daughter that old—but there you go. She has inherited a beautiful style to her fleece from her world famous sire & long term fineness from Jolimont Romeo her maternal grandsire.

All of these males have in their day been Supreme Champions at the highest of standards.

Felicity has bred us many a championship winning cria and still has many years of breeding ahead of her, she is in excellent condition and body score—fertility guaranteed.

Unjoined



Suggested Covering Sire
Forestview Prince Of
Thieves



Champion cria from
Felicity & Prince of
Thieves

Lot 8

JARRACK PARK MAHALIA



Medium Fawn Huacaya Female

IAR 183419 • DOB 20/10/2013

Jolimont Warrior

Blue Grass Bollinger

Sire: Lillyfield Alchemy

Dam: Jarrack Park Yvette

Brabant Fairy-Jane

Jarrack Park Valkyrie

Fleece Stats

2014: 19.4 mic, 4.4 SD, 100% CF

Mahalia appears light fawn from the outside, but when you open that lovely fleece you see a rich medium fawn bouncing back at you. She is still a relatively young female and her crimp style has continued to improve as she has got older, so bright things are ahead for this young lady.

Mahalia has inherited a lovely frame and excellent head style from her sire, with good density from her grandsires Warrior & Bollinger—this is a young female well worth inspection.

Mahalia's dam is also in the auction—so see them both.

Mahalia comes with full fertility guarantee.



Suggested Covering Sire
Lillyfield Up The Ante



Mahalia Fleece June 2014

ALPHA CENTAURI RAQUELLE

**Solid White Huacaya Female**

IAR 184088 • DOB 14/12/2013

Benleigh Lorimer

Sire: Elyson Jupiter

Benleigh Jubilation

Brabant Chieftain

Dam: Brabant Rosalin

Brabant Electra

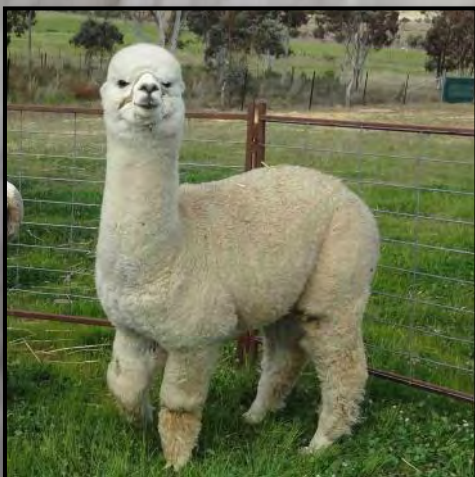
Fleece Stats

2014: 18.1 mic, 3.7 SD, 100% CF

Raquelle in an outstanding young female whom is sired by our 11 time Supreme Champion stud male Elyson Jupiter.

Her dam Rosalin is consistently holding a fine fleece of 18.9 mic & 3.3 sd at 4 years of age. Raquelle is a compact, well proportioned female with a simply stunning very dense, fine fleece displaying a bundling, highly aligned crimp structure throughout. She is very pleasing to the eye and has great fleece coverage from head to toe. You need to view this female to really appreciate the quality of her fleece. Raquelle was shorn as a cria on the 31/12/2013. Raquelle's half sister Rosanagh is Lot 25. Raquelle will be shown by us for the first time at the CW NSW Region Show on 02 Aug.

Unjoined



Suggested Covering Sire
Alpha Centauri Comanchee



Raquelle Fleece
June 2014



Raquelle
June 2014

LILLYFIELD CHAMORU

**Solid Light Fawn Huacaya Female**

IAR 189244 • DOB 29/04/2013

Jolimont Alessio

Sire: Forestview Prince Of Thieves

Blue Grass Choisi

Blue Grass Bollinger

Dam: Lillyfield Serena

Wongadene Peruvian Irina

Fleece Stats

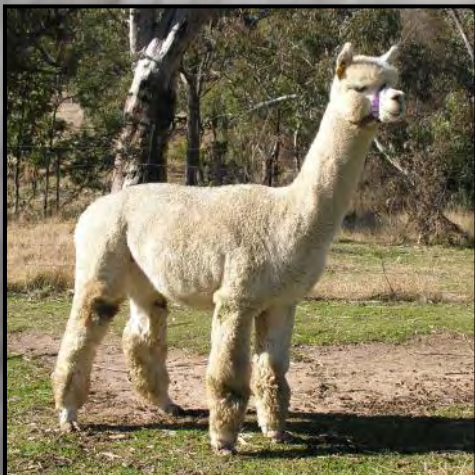
2013: 16.4 mic, 3.6 SD, 100% CF

Part of the Lillyfield 2014 Show Team—Chamoru is an attractive Prince of Thieves daughter carrying outstanding fineness from her dam. Her fleece is bright well aligned and has excellent density with very low levels of medulated fibres. She has been shown in 2014, winning a 1st place.

Her sire is a Supreme Champion, who produces Supreme Champions & her full sibling “Nasera” was an outstanding broad ribbon winning show girl in her own right & her dam has just produced the best cria of the season—so the genes are there to produce quality stock

So if you are looking for a step up in the breeding program Chamoru represents excellent value.

Full fertility guarantee. [JDMAP MN3](#)



Suggested Covering Sire
EP Cambridge Oblivion ET



Full Sister Nasera @ the National Show



Chamoru Fleece 2014

ALPHA CENTAURI PEMBERTON



Medium Brown Huacaya Male

IAR 184040 • DOB 08/02/2013

Blue Grass Centurion

Sire: Bedrock Sentinel

Windsong Valley Summer Snow

Lotus Dream Tang Dynasty

Dam: Flying Colours Miss Penelope

Flying Colours Penelope

Fleece Stats

2013: 17.4 mic, 3.6 SD, 100% CF

Show Results

Res Champion Int Male - Boorowa Show

1st Int Roan Male - Bathurst Royal

1st Int Roan Male - Moss Vale Show

1st Int Roan Male - Boorowa Show

1st Int Roan Male - Canberra Royal

2nd Int Roan Male - Goulburn Show

3rd Junior Brown Male - Charles Ledger

4th 6-12 mths Brown Fleece - Sydney Royal

Pemberton is a well grown male with great conformation and presence. He has a great pedigree with Blue Grass Centurion and double Jolimont Warrior in the family tree. He exhibits a dense, very bright, fine fleece with a well aligned, high frequency crimp on a long staple with exceptional handle. It is the brightness, fineness and character in his fleece that are outstanding on this male. He would be an asset to a breeding program looking for colour and great genetics.

He has successfully been shown as a brown and roan during his show career.

All certification Vet checks and paperwork will be completed prior to transfer.



Pemberton
June 2014



Pemberton Fleece
2014



Pemberton Fleece
2014

I get everything
I need at

www.
grandeverge
.com

sales@grandeverge.com

ph: 02 6562 7888

Mark and Kim Irving
Alpaca Breeders' Online Supplies



ALPHA CENTAURI NATALEE



Light Fawn Huacaya Female

IAR 184066 • DOB 07/11/2013

Blue Grass Centurion

Alpha Centauri Vyper

Sire: Bedrock Sentinel

Dam: Alpha Centauri Nikeysha

Windsong Valley Summer Snow

Brabant Nicolette

Fleece Stats

2014: 17.1 mic, 3.4 SD, 100% CF

Natalee is a compact female with room to do some more growing.

Her fleece has a good level of density and is exceptionally bright with a highly aligned well defined crimp. Her Dam still retains a very pleasing fleece and with Sentinel as her sire we expect that Natalee will retain excellent stats and structure in subsequent fleeces.

Natalee was shorn as a cria on the 31/12/2013.

Unjoined



Suggested Covering Sire
ElySION Jupiter



Natalee Fleece
2014

ALPHA CENTAURI MISS CHEVIOUS



Dark Fawn Huacaya Female

IAR 184091 • DOB 04/01/2014

Shanbrooke Society Class Act

Wyterraica Propaganda

Sire: Alpha Centauri Vyper

Dam: Flying Colours Miss Charmer

Molonglo Xuanzong

Flying Colours Miss Penelope

Fleece Stats

2014: 18.4 mic, 4.7 SD, 100% CF

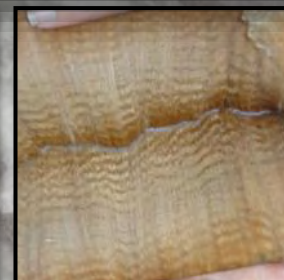
Miss Chevious is a very upstanding, attractive dark fawn female with a fantastic pedigree including Shanbrooke Society Class Act and Wyterraica Propaganda in the family line.

Her bright honey coloured fleece has exceptional handle and has a medium frequency crimp with a good level of density. She has great fleece coverage from nose to toes! Her full brother Callahan is Lot 22.

Unjoined



Suggested Covering Sire
ElySION Jupiter



Miss Chevious
Fleece 2014

LILLYFIELD SANTANNA



Solid White Certified Huacaya Male

IAR 110310 • DOB 14/12/2006

Benleigh Ringleader

Somerset Peru Prince Pedro

Sire: Blue Grass Bollinger

Dam: Wongadene Tina

Purrumbete Vanilla

Wongadene Arena

Fleece Stats

2013: 24.1 mic, 4.00 SD, 93% CF

Santanna is a certified male with many cria on the ground. He is a Championship winning Bollinger son with an incredible frame., well defined crimp & a gentle nature.

Santanna has been able to produce cria in all the colour ranges from bright whites through to show winning blacks—he truly is a male for all seasons.

This male is a great worker who can put well defined crimp & lustre into his cria.

With the breakup of the Jarrack Park herd—many of his prospective girls have been sold on and the other good girls on the farm are his 1/2 sisters so its time for a new pasture & when that happens some new buyer is going to be very fortunate and realise the potential of this male.



Santanna Cria



Santanna Fleece

LILLYFIELD NIKITTA



Solid Light Fawn Huacaya Female

IAR 175515 • DOB 08/04/2011

Benleigh Ringleader

Blue Grass Khan

Sire: Blue Grass Bollinger

Dam: Lillyfield Nikiya

Purrumbete Vanilla

Somerset Peruvian Pavlova

Fleece Stats

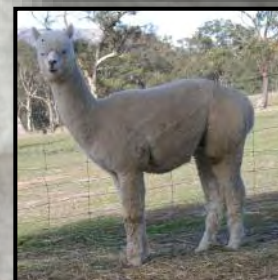
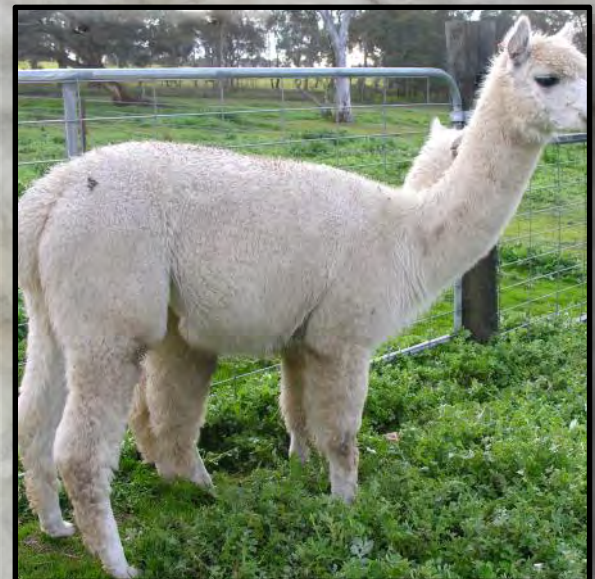
2013: 19.6 mic, 4.2 SD, 98% CF

Nikitta is a lovely Pregnant breeding female, births easily is an excellent mum and carries those fabulous Bollinger genes.

Her fleece is soft with a high frequency low amplitude crimp and high CRV. More about fleece

Last years cria is also in this Auction so you see the type cria Nikitta can produce, now mated to multiple Supreme Champion Lillyfield Scorcerer she is due in mid November 2014—given the quality of Scorcerer crias from Bollinger daughters to date, we can expect big things from this girl later this year.

Nikitta comes with a fertility & live cria guarantee

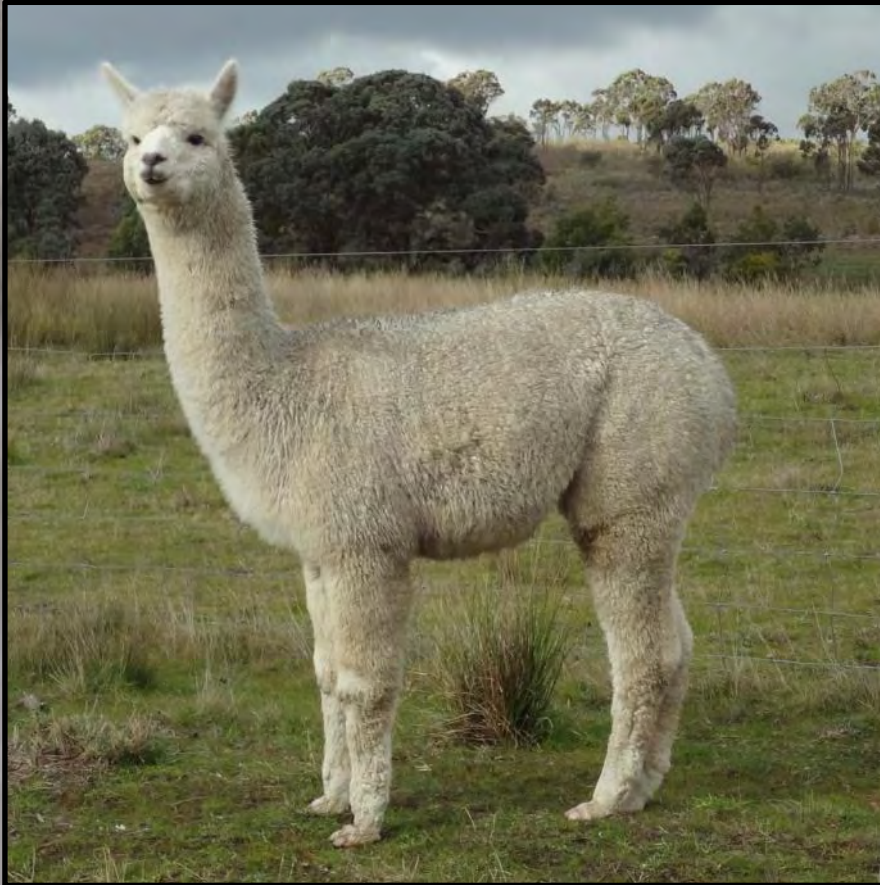


Covering Sire
Lillyfield Scorcerer



Nikitta Cria 2014

ALPHA CENTAURI CRYSTEN



White Huacaya Female

IAR 184043 • DOB 23/02/2013

Benleigh Lorimer

Sire: Elyson Jupiter

Benleigh Jubilation

Shanbrooke Society Class Act

Dam: Alpha Centauri Conchessa

Lotus Dream Star Jasmine

Fleece Stats

2013: 18.3 mic, 4.9 SD, 98.4% CF

Crysten is a solid frame female with excellent conformation. She is the full sister to Elitealpaca Carliah - Supreme Champion Gunning 2012. She has all the hallmarks of fleece characteristics from her sire Jupiter - very bright, dense with a highly aligned, high frequency crimp on a long staple. In her pedigree are great names such as Purrumbete Brigantine, Benleigh Bellissimo, Shanbrooke Accoyo El-Prado, Shanbrooke Society Class Act and Jolimont Warrior.

Currently pregnant to Kommissar, with double Jupiter genetics, this should be a cria worth waiting for - but not for that long as she is due in November 2014. She is one of only five females in the auction mated to Kommissar. Genetically Crysten is right up there with the cream of our breeding. Not shown by us as she fell pregnant at just 9.5 months of age. We have very high expectations for the cria she currently has on board.

Currently pregnant to Alpha Centauri Kommissar LMD 01/12/2013.



Covering Sire
Alpha Centauri Kommissar



Crysten Fleece
2014



Crysten
June 2014

LILLYFIELD AZAMOUR

**Solid Light Brown Pregnant****Huacaya Female**

IAR 110316 • DOB 11/07/2007

Jolimont Alessio

Sire: Forestview Prince of Thieves

Blue Grass Choisi

Blue Grass Khan

Dam: Lillyfield Matilda

Blue Grass Pretty Phoebe

Fleece Stats

2013: 23.5 mic, 4.4 SD, 93% CF

Show Results

6 x 1st Placing's

2 x Reserve Championships

Azamour is the first Australian release of Matilda bloodlines, Matilda is our best female without doubt & the release of one of her daughters is a big step for our breeding program (1/2 sister to Lillyfield Jack of Spades, Spades are Trumps & Up The Ante).

Azamour is a perfect example of the long term fineness that Matilda carries, she is an extremely attractive animal with lovely stature & prominent head style. Highly successful show girl in her own right winning many first places & a number of board ribbons (no mean feat for a brown). Her fleece as a junior was very dense, lustrous with well defined high frequency pencils & she still retains a beautiful fleece as a 7 year old. Azamour is an excellent dam producing quality cria.

Mated to multiple Supreme Champion—ElySION Lochinvar (Benleigh Lorimer) & due in April 2015—live cria guarantee
Pregnant

JDMAP MN3



Covering Sire
ElySION Lochinvar



Azamour as an adult



Azamour June 2014

ALPHA CENTAURI STAR ORLAITH



Light Fawn Huacaya Female

IAR 184068 • DOB 09/11/2013

Blue Grass Centurion

Eringa Park Southwind

Sire: Bedrock Sentinel

Dam: Xanadu Starlight

Windsong Valley Summer Snow

Xanadu Dawn

Fleece Stats

2014: 19.1 mic, 3.8 SD, 100% CF

Star Orlaith is a delightful looking female with a great frame and a beautiful fleece. She has all the fleece qualities that her sire exhibits and more - an extremely bright well nourished fleece with both density and a crisp defined crimp on a correct frame. Her Dam has consistently produce top quality offspring for us.

Star Orlaith was shorn as a cria on the 31/12/2013.

Unjoined



Suggested Covering Sire
Alpha Centauri
Kommissar



Star Orlaith Fleece
2014

ALPHA CENTAURI LEANNDA



Light Fawn Huacaya Female

IAR 184097 • DOB 17/01/2014

Blue Grass Centurion

Shanbrooke Society Class Act

Sire: Bedrock Sentinel

Dam: Pacanalla Leocadia

Windsong Valley Summer Snow

Jurustalle Princess Pia

Fleece Stats

2014: 18.2 mic, 4.8 SD, 100% CF

Leannnda is a cute little female with a solid frame and good proportion.

Her fleece displays a high frequency crimp, is very bright and dense with a long staple length. Leannnda has excellent temperament and would suit a buyer seeking easy to handle females capable of producing quality fleece.

Unjoined



Suggested Covering Sire
Elysion Jupiter



Leannnda Fleece
2014

LILLYFIELD MANON



Solid White Huacaya Female

IAR 189238 • DOB 08/01/2013

Forestview Prince Of Thieves

Blue Grass Bollinger

Sire: Lillyfield Nureyez

Dam: Lillyfield Torah

Wongadene Coppelia

Wongadene Melody

Fleece Stats

2013: 19.2 mic, 3.2 SD, 100% CF

Manon is a member of the girls group, the Melody family of prolific female producers, they get pregnant easily, birth well and raise very healthy active cria.

She is a nicely put together young female with a long medium frequency style fleece with a lovely handle and excellent lustre

Halter Trained & comes with full fertility guarantee
Unjoined

JDMAP MN3



Suggested Covering Sire
EP Cambridge Oblivion
ET

Manon Sire—Nureyez

JARRACK PARK YVETTE



Light Fawn Pregnant Huacaya Female

IAR 130285 • DOB 14/01/2008

Benleigh Ringleader

Timber Top Lassiter

Sire: Blue Grass Bollinger

Dam: Jarrack Park Valkyrie

Purrumbete Vanilla

Jarrack Park India Rose

Fleece Stats

2013: 24.2 mic, 4.7 SD, 90% CF

Yvette is another of the Jarrack Park dispersal girls, but she is no slouch. She has bred some beautiful cria and her last drop a fabulous young female is also in the Auction see lot "Mahalia".

Yvette has a spot on her side & the cria are usually light fawn, so she belongs in a coloured breeding program. As a younger animal she had a very attractive high frequency crimp with a real commercial length.

She breeds very well to Alchemy and we have mated her again to him with expected due date of early November 2014. You can see the last drop results so the proof is there for a quality breeder.

Comes with full fertility guarantee & live cria guarantee



Covering Sire
Lillyfield Alchemy

Yvette cria

ALPHA CENTAURI CALLAHAN

**Solid Medium Fawn Huacaya****Male**

IAR 184034 • DOB 03/01/2013

Shanbrooke Society Class Act

Sire: Alpha Centauri Vyper

Molonglo Xuanzong

Wyterrica Propaganda

Dam: Flying Colours Miss Charmer

Flying Colours Miss Penelope

Fleece Stats

2013: 18.1 mic, 4 SD, 99.6% CF

Show Results

- 1st Int M/D Fawn Male - Goulburn Show 14
- 1st Int M/D Fawn Male - Moss Vale Show 14
- 1st Junior M/D F Male - Charles Ledger 13
- 2nd Int M/D Fawn Male - Bathurst Royal 14
- 2nd Int M/D Fawn Male - Sydney Royal 14
- 2nd Int M/D Fawn Male - Boorowa Show 14
- 3rd Int M/D Fawn Male - Canberra Royal 14

Callahan is a consistent medium fawn in colour and has a solid frame and good conformation. He has an exceptionally soft handling fleece, with fineness, density and an even medium frequency crimp across his saddle. With Shanbrooke Society Class Act, Shanbrooke Accoyo El-Prado, Jolimont Romeo and Wyterrica Propaganda in his pedigree he is packed with great genetics. He has a calm temperament and would be an asset to a coloured breeding program. For those breeding colour or looking to introduce colour into their breeding programme should seriously consider Callahan.

Callahan's full sister Miss Chevious is Lot 13

All certification Vet checks and paperwork will be completed prior to transfer.



Callahan
June 2014



Callahan Fleece
June 2014



Callahan
June 2014

LILLYFIELD KAEYA



Solid Medium Fawn
Pregnant Huacaya Female
 IAR 175517 • DOB 21/04/2011

Jolimont Alessio
Sire: Forestview Prince of Thieves
 Blue Grass Choisi

Blue Grass Bollinger
Dam: Lillyfield Katya
 Wongadene Peruvian Irina

Fleece Stats
 2013: 21.4 mic, 4.1 SD, 94% CF

Kaeya is a very attractive Prince Of Thieves / Bollinger cross. She is a lovely female with a pretty head style, bright lustrous fleece and has a well proportioned frame. This is the fawn colour we all love, warm rich and having a soft luxurious handle—a real breeding female

She has been mated to Lillyfield Up the Ante our broad ribbon winning full brother to Lillyfield Jack of Spades & Lillyfield Spades are Trumps and is spitting off with an expected delivery date of Mid February 2015—as would be expected she comes with a fertility and live cria guarantee.

This girl is a must for those wanting to breed superior coloured animals

Pregnant
JDMAP MN3



Covering Sire
 Lillyfield Up The Ante



Kaeya Sire "Prince of Thieves"



Kaeya Fleece 2014

ALPHA CENTAURI ALESSANDREA



Solid Light Fawn Female

IAR 184024 • DOB 22/12/2012

Benleigh Lorimer

Adori Accoyo Altaz

Sire: ElySION Jupiter

Dam: Adori Alkira

Benleigh Jubilation

River Ridge Rainstorm

Fleece Stats

2013: 20.5 mic, 4.3 SD, 97.9% CF

Alessandrea is a Jupiter sired female from one of our most highly regarded female breeding lines—River Ridge Rainstorm. Alessandrea has Auzengate, Altaz & Brigantine in her pedigree. She has a strong frame which is packed with a dense fleece which displays a crisp, highly aligned crimp structure on a long staple.

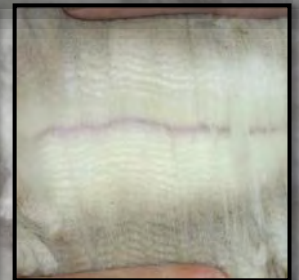
Currently mated to Alpha Centauri Outlaw LMD 26/05/2014

Show Results

3rd Intermediate Light Fawn Female - Boorowa Show 2014



Covering Sire
Alpha Centauri Outlaw



Alessandrea Fleece
2014

ALPHA CENTAURI ROSANAGH



Light Fawn Female

IAR 184022 • DOB 08/12/2012

Blue Grass Centurion

Brabant Chieftain

Sire: Bedrock Sentinel

Dam: Brabant Rosalin

Windsong Valley Summer Snow

Brabant Electra

Fleece Stats

2013: 14.8 mic, 3.2 SD, 100% CF

Rosanagh is a superfine female with a fantastic level of density considering how fine she is. Her fleece is extremely bright and has a high frequency, low amplitude crimp on a long staple. One of only two females mated to our 11 time Supreme Champion stud sire ElySION Jupiter, this is a cria that will be worth the wait. Rosanagh's half sister Raquelle, whom is sired by ElySION Jupiter is Lot 7 and is definitely worth a look at what you may get from Rosanagh's mating to Jupiter.

Rosanagh's micron, SD and density and mated to Jupiter. It does not get much better than this.

Currently mated to ElySION Jupiter 08/06/2014



Covering Sire
ElySION Jupiter



Rosanagh Fleece
2014

LILLYFIELD MARNIE



**Solid Light Fawn Pregnant Huacaya
Female**

IAR 130506 • DOB 23/11/2008

Benleigh Ringleader

Somerset Peru Prince Pedro

Sire: Blue Grass Bollinger

Dam: Wongadene Melody

Purrumbete Vanilla

Somerset Peruvian Arista

Fleece Stats

2013: 22.2 mic, 4.6 SD, 94 CF

Marnie is a highly attractive & beautiful breeding female who has produced lovely cria for us in the past.

Her dam is one of the good girls, who always has girls with a real quality about them.

Marnie is mated to Prince of Thieves & due in late November 2014

She has that rich & buttery feel to her fleece that Bollinger gives with a high frequency low amplitude crimp style

A lovely female all round



Covering Sire
Forestview Prince of
Thieves



Marnie July 2014

Call us for all your alpaca health needs and advice.

Murrumbateman Vet Clinic

Lot 1, Rose Street

Murrumbateman NSW 2582

6227 5955

Email: yassvet@yassvet.com.au

Yass Veterinary Hospital

72-76 Laidlaw Street

Yass NSW 2582

6226 4444

Web: www.yassvet.com.au



Yass Valley Veterinary

"Helping you keep your animals healthy and happy"

Our extensive range of services include...

- Farm visits
- Equine examinations
- Equine Dentistry & Reproduction
- Nutrition advice
- Health Checks & Vaccinations
- X Rays & Ultrasound
- Surgery & Dentistry
- Emergency medicine & hospitalisation

ELITEALPACA IRON MAIDEN

**Medium Grey Huacaya Female**

IAR 173084 • DOB 05/12/2011

Monara Park Mackinnon

Sire: Wyterrica John Boy

Wyterrica Sophia

Talca Rohani

Dam: Morning Star Bluebell

Morning Star Flora

Fleece Stats

2013: 23 mic, 5 SD, 91.1% CF

Show Results

Champion Grey Female - SNSWR 2012

1st Intermediate Grey - Gunning Show 2013

1st Junior Grey - Charles Ledger Show 2012

1st Junior Grey - Mid North Coast 2012

1st Junior Grey - SNSWR Colourbration 2012

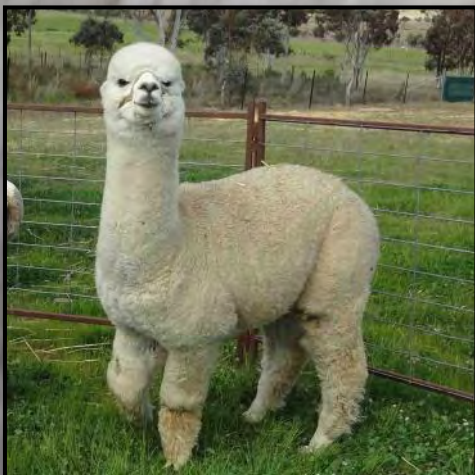
2nd Intermediate Grey - Canberra Royal 2013

3rd Junior Grey - Central Western NSW 2012

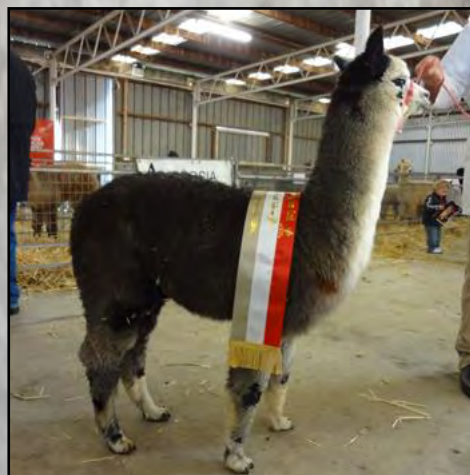
Iron Maiden is a well grown, quality John Boy sired female. She performed well in the show ring as a Junior and Intermediate and was awarded Champion Grey Female at the Southern NSW Region Colourbration in 2012. Iron Maiden is a fantastic attentive mum to her stunning female cria - Indianah, sired by Bedrock Sentinel. We have decided to keep Indianah and she will not be sold with Iron Maiden.

She is one of only four females in the auction currently pregnant to Comanche. Combined with her colour and his good looks & fleece characteristics they should produce a fantastic cria.

Currently pregnant to Alpha Centauri Comanche LMD 30/04/2014



Covering Sire
Alpha Centauri Comanche



Champion Grey Female
Southern NSW Region
Colourbration 10 June 2012



Iron Maiden's Female Cria
Alpha Centauri Indianah

LILLYFIELD SHAYMAN



Solid Light Fawn Huacaya Male

IAR 160817 • DOB 01/12/2010

Benleigh Ringleader

Brabant Abelone

Sire: Blue Grass Bollinger

Dam: Brabant Fairy Jane

Purrumbete Vanilla

Brabant Arianna

Fleece Stats

2013: 21.6 mic, 4.4 SD, 96% CF

Suggested offering of 2 males to either start that new enterprise or raise the impact of an existing herd.—being sold separately but should be considered together as a breeding plan.

1st Shayman is a beautifully built Bollinger son from one of our best dams - Fairy Jane was a multi Championship winning female when younger (2 others sons are stud males in the herd). Shayman has great bone, density, style, crimp a fabulous coverage. He comes with the best genetics and is sure to improve the overall coverage and density of your girls

His fleece is well aligned with real guts—great fleece stats for a 3 year old male. He is a creamy light fawn, with low primary fibres.



Shayman as intermediate



Shayman Fleece 2014

LILLYFIELD COMMODORE



Light Fawn Huacaya Male

IAR 175532 • DOB 28/03/2011

Jolimont Alessio

Blue Grass Bollinger

Sire: Forestview Prince Of Thieves

Dam: Lillyfield Sweet Sucion

Benleigh Jubilation

Blue Grass Camille

Fleece Stats

2013: 21.1 mic, 4.2 SD, 97% CF

2nd Commodore is again that marvellous combination of Bollinger & Prince of Thieves—producing excellent bone, a great depth of frame, coverage & lovely density - he is a highly attractive animal.

Commodore has been a very successful show animal, winning either first or second in every show entered including Canberra Royal in both Adult & Senior years.

His fleece is well aligned with real guts—this male is there to add density, particularly recommended to a coloured breeding program as his dam is light brown. Still holding excellent fleece statistics for a Senior Male—this boy is no slouch and comes highly regarded, - given Warrior, Sculptor, Inti Ledger Dream & High Society in his back ground.



Commodore as an Intermediate



Commodore Fleece 2014

ALPHA CENTAURI MYKAILO



Solid Black Huacaya Female

IAR 184059 • DOB 08/04/2013

Monaro Park Mackinnon

Pinjarra Buenisimo

Sire: Wyterrica John Boy

Dam: Alpha Centauri Myamee

Wyterrica Sophia

Wyterrica Topsy

Fleece Stats

2013: 21.2 mic, 5.4 SD, 94.4% CF

Mykailo's sire John Boy has certainly stamped his colour into this quality female. She is compact but with great proportion and beautifully black with a very dense, even crimped fleece.

Currently mated to Bedrock Sentinel LMD 16/05/2014 TBC

Show Results

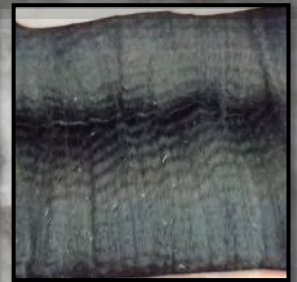
1st Intermediate Black Female - Bathurst Royal Show 2014

1st Junior Black Female - Moss Vale Show 2014

3rd Junior Black Female - Boorowa Show 2014



Covering Sire
Bedrock Sentinel



Mykailo Fleece
2014

ELITEALPACA MAKHYZA



Solid White Huacaya Female

IAR 162820 • DOB 11/04/2010

EP Cambridge Peruvian Maximus

Adelyn Highland Mist

Sire: Woodland Chase Milagro

Dam: Alpha Centauri Makenna

Woodland Chase Chachara

Xanadu Starlight

Fleece Stats

2013: 19.3 mic, 4.8 SD, 97.3% CF

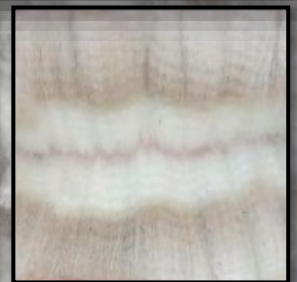
Makhyza is a medium sized female and a great mum. She is still holding great fleece statistics at over 4 years old. Currently pregnant to Alpha Centauri Kommissar, this is a cria worth waiting for.

A very rare offering as we do not normally release any of our Milagro sired females for sale.

Currently mated to Alpha Centauri Kommissar LMD 10/03/2014



Covering Sire
Alpha Centauri
Kommissar



Makhyza Fleece
2014

EVERLAST SIGNATURE TUNE



Light Fawn Huacaya Female

IAR 189045 • DOB 29/10/2013

Jolimont Commissario

Blue Grass Bollinger

Sire: EP Cambridge Oblivion ET

Dam: Everlast In Tune

EP Cambridge Illustrious

Lillyfield Carrera

Fleece Stats

2014: 18.7 mic, 4.4 SD, 99% CF

Signature Tune is a rare release from the farm—we have sold very few Oblivion cria, so she is one highly recommended to inspect.

This weanling female is well grown, producing excellent lustre with good staple definition and has very even coverage over her entire frame. She has excellent bone and depth of body with that soft handling well nourished fleece.

With the back line of Bollinger & Oblivion with Commissario & Illustrious this young lady is sure to breed well.

Halter Trained & comes with a full fertility guarantee
Unjoined



Suggested Covering Sire
Lillyfield Alchemy



Signature Tune Fleece
June 2014

JARRACK PARK NANIA



Solid Dark Fawn Huacaya Female

IAR 183420 • DOB 18/11/2013

Forestview Prince Of Thieves

Windsong Valley Braveheart

Sire: Lillyfield Nureyez

Dam: Jarrack Park Querida

Wongadene Coppelia

Cedar House Nightingale

Fleece Stats

2014: 19.4 mic, 4.1 SD, 98% CF

Narnia is a very pretty weanling female with exceptional softness to her very long fleece. She has good density and is developing a very pleasant medium frequency crimp style, that exhibits excellent lustre.

Her sire Nureyez is a real favourite in the herd—producing cria with exceptional coverage and extremely long soft handling fleece. Her dam has some lovely Highlander genetics in her background and has bred some very nice cria for us in the past—so the runs are on the board.

Narnia is a part of the dispersal of the Jarrack Park herd, however she still comes with a complete fertility guarantee.

Halter trained



Suggested Covering Sire
Lillyfield Alchemy



Narnia Fleece June 2014

ALPHA CENTAURI SHAWNA



Solid Light Fawn Huacaya Female

IAR 184049 • DOB 10/03/2013

Benleigh Lorimer

Sire: Elyson Jupiter

Benleigh Jubilation

Adori Astro

Dam: Alpha Centauri Shanoa

Lotus Dream Star Jasmine

Fleece Stats

2013: 16.2 mic, 3.9 SD, 100% CF

Show Results

- Res Champion Int Female - Bathurst Royal
- Res Champion Int Female - Moss Vale Show
- Res Champion Int Female - Boorowa Show
- 1st Int Light Fawn Female - Bathurst Royal
- 1st Intermediate Light Fawn - Sydney Royal
- 1st Intermediate Light Fawn - Goulburn Show
- 1st Int Light Fawn Female - Moss Vale Show
- 1st Int Light Fawn Female - Boorowa Show
- 1st Junior Light Fawn - Canberra Royal

Shawna is one of the best that our breeding has to offer! She carries a superfine fleece of 16.2 micron while still holding an exceptional level of density. She has a high frequency, high amplitude crimp structure which is uniform across her frame. Shawna is an impressive female with excellent balance and proportion. Both her dam Alpha Centauri Shanoa and half brother Alpha Centauri Comanchee have impressive show records. This beautifully elegant female is a rare offering and would hold her own in the best breeding program. She is mated to Alpha Centauri Addixion (Champion 30-48 Months White Fleece—Sydney Royal Easter Show 2014). One of only two females in the auction mated to Addixion.

If not sold at auction Shawna will be shown at this years AAA National Show and will be available for viewing and purchase.

Currently mated to Alpha Centauri Addixion LMD 05/05/2014



Covering Sire
Alpha Centauri Addixion



Shawna
June 2014



1st Intermediate Light Fawn &
Reserve Champion
Bathurst Royal show 2014

ALPHA CENTAURI ROKSHARNI



Solid Dark Brown Huacaya Female

IAR 202936 • DOB 10/03/2014

Monara Park Mackinnon

Adori Astro

Sire: Wyterrica John Boy

Dam: Elitealpaca Rikaro

Wyterrica Sophia

Xanadu Moondance

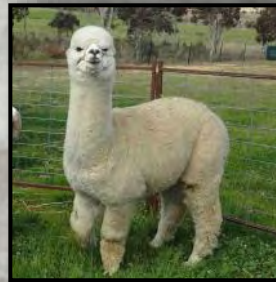
Fleece Stats

Not yet tested

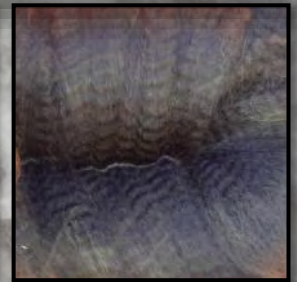
Roksharni is an upstanding young female sired by Wyterrica John Boy. She has a beautiful dark chocolate coloured fleece which is very dense and showing a pleasing crimp structure. Her Grand Dam, Moondance is a multiple fleece Champion at Sydney Royal and AAA National.

John Boy was specifically mated to Rikaro with the sole purpose of breeding either a brown or black female with fleece qualities normally seen in whites and light fawns. This pairing certainly achieved our aim.

This is the perfect female to be breed back to another black male in the hope that she will produce an outstanding black offspring. We currently do not have another black male to put over her so she is reluctantly offered for sale. Unjoined



Suggested Covering Sire
Alpha Centauri
Comanchee



Roksharni Fleece
June 2014

WYTERRICA WACHUA



Solid Dark Fawn Huacaya Female

IAR 173121 • DOB 14/05/2011

Blue Grass Waterloo Sunset

Millduck Horatio

Sire: Wyterrica Propaganda

Dam: Wyterrica Impala

Wyterrica Dark Eyes

Wyterrica Lottie

Fleece Stats

2013: 20 mic, 3.7 SD, 98.4% CF

Wachua is still holding excellent fleece results and has an exceptional show record. A **Supreme Champion** mated to a **Supreme Champion**.

Pregnant to Alpha Centauri Kommissar LMD 25/12/2013

Supreme Champion M/D Fawn - SNSW Region Colourbration 2012

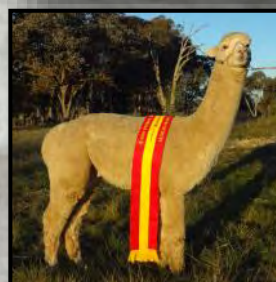
Champion M/D Fawn Female - SNSW Region Colourbration 2012

Reserve Champion Junior Female - Bathurst Royal 2012

Reserve Champion Junior Female - Goulburn Show 2012

1st Junior M/D Fawn Female - Sydney Royal Show, Bathurst Royal, Canberra Royal, Moss Vale, Goulburn all in 2012

1st Intermediate M/D Fawn Female - SNSWR Colourbration, Mid North Coast, Charles Ledger all in 2012



Covering Sire
Alpha Centauri
Kommissar



Wachua Fleece
June 2014

ALPHA CENTAURI RAZOR'S EDGE



Solid White Huacaya Male

IAR 184058 • DOB 25/05/2013

Benleigh Lorimer

Sire: Elyson Jupiter

Benleigh Jubilation

Patagonia Celtic Triumph

Dam: Patagonia Celtic Rhianna

Jandarra Stevie Nicks

Fleece Stats

2013: 18.3 mic, 4.3 SD, 99% CF

Show Results

- Champion Junior Male - Bathurst Royal 14
- Champion Junior Male - Sydney Royal 14
- Champion Junior Male - Goulburn Show 14
- Champion Junior Male - Moss Vale Show 14
- 1st Junior White Male - Bathurst Royal 14
- 1st Junior White Male - Sydney Royal 14
- 1st Junior White Male - Goulburn Show 14
- 1st Junior White Male - Moss Vale Show 14

Razor's Edge is from elite genetics with Jupiter as his sire and Patagonia Celtic Triumph as the sire of his dam. He has a well organised fleece that is beautifully bright, tightly bundled with highly aligned crimp definition accompanied by excellent conformation, good coverage and exceptional density. Razor is still a young male with a lot more room to grow. Frame and density are Razor's standout qualities, he has a broad, deep barrelled chest, solid bone and covered from head to toe in a super dense crimp fibre. A wonderful male with a very bright future ahead of him.

If you are looking for a new stud for your breeding programme it would be difficult not to consider Razor's Edge. A Jupiter sired male from a Celtic Triumph dam. Industry leading genetics at its best.

All certification Vet checks and paperwork will be completed prior to transfer.



Razor's Edge
June 2014



Razor's Edge
Fleece June 2014



Razor's Edge
June 2014

LILLYFIELD CHORUS LINE



Solid Light Fawn Pregnant Huacaya Female

IAR 175536 • DOB 07/12/2011

Jolimont Alessio

Blue Grass Bollinger

Sire: Forestview Prince of Thieves

Dam: Lillyfield Choir Girl

Blue Grass Choisi

Wongadene Peruvian Aria

Fleece Stats

2013: 18.4 mic, 3.9 SD, 99% CF

Well built superfine crimped POT daughter with that lovely touch of Bollinger to give frame & substance of bone.

Mated to Alchemy & comes with a live cria guarantee

Chorus line has a well developed fleece structure with excellent lustre and a soft buttery feel

Real breeding female to go on with

Halter Trained & comes with a full fertility guarantee



Covering Sire
Lillyfield Alchemy



Chorus Line Fleece July
2014

JARRACK PARK HENRIETTA



Solid Light Fawn Huacaya Female + SLF Female Cria

IAR 130292 • DOB 10/03/2009

Benleigh Ringleader

Timbertop Lassiter

Sire: Blue Grass Bollinger

Dam: Jarrack Park Valkyrie

Purrumbete Vanilla

Jarrack Park India Rose

Fleece Stats

2013: 22.5 mic, 4.0 SD, 95.6 CF

Henrietta is a well built, well developed Bollinger daughter with excellent density and great capacity through her frame. Her full brother was a multiple Championship winning male, who has gone on to sire some wonderful cria.

Henrietta comes with a most charming female cria at foot by Nureyez "Octavia" The cria alone makes Henrietta well worth considering.

These 2 girls are a stylish pair and we would highly recommend putting Henrietta back to Nureyez & you will agree when you see the cria.

This girl has great genetics behind her and is a fertile and highly productive female.



Suggested Covering Sire
Lillyfield Nureyez & Sire
of Cria



Henrietta's Cria "Octavia"

PATAGONIA CLAUDIA



Solid White Huacaya Female

IAR 187101 • DOB 02/05/2011

Peruvian Sire: Jolimont Caesar, Patagonia Celtic Triumph
Peruvian Dam, Dam: Patagonia Celtic Sunspirit ET, Patagonia Sunline

Fleece Stats

2013: 19.6 mic, 4 SD, 98.5% CF

Claudia is a quality, well grown female with fantastic genetics. Her fleece is extremely bright and very appealing to the hand and eye. She is only one of five females in the auction mated to Kommissar. She is due towards the end of 2014, so not long to wait for her cria.

Claudia is currently pregnant to Alpha Centauri Kommissar LMD 2/12/13



Covering Sire Alpha Centauri Kommissar

Claudia Fleece 2014

ELITEALPACA KALITA



Light Fawn Huacaya Female

IAR 173103 • DOB 12/04/2012

Shanbrooke Society Class Act, Shanbrooke Society Class Act
Sire: Alpha Centauri Vyper, Dam: Alpha Centauri Kamria
Molongo Xuanzong, Xanadu Moondance

Fleece Stats

2013: 20.9 mic, 4.1 SD, 96.8% CF

Kalita is a medium sized female with great density and fleece coverage. Her fleece displays excellent brightness and evenness of staple.

She has double Shanbrooke Society Class Act in her pedigree. She is currently pregnant to Kommissar with a cria due towards the end of 2014.

Currently pregnant to Alpha Centauri Kommissar LMD 14/12/2013

Kalita's half sister Kiskadee is Lot 52



Covering Sire Alpha Centauri Kommissar

Kalita Fleece 2014

ALPHA CENTAURI VIKTORIYA

**Dark Fawn Huacaya Female**

IAR 184054 • DOB 04/04/2013

Benleigh Lorimer

Sire: ElySION Jupiter

Benleigh Jubilation

Almora Nomad

Dam: Wyterrica Vibeke

Wyterrica Kristabel

Fleece Stats

2013: 17.3 mic, 4.3 SD, 100% CF

Show Results

Champion Jnr Female - Moss Vale Show 14
 1st Int M/D Fawn - Bathurst Royal 14
 2nd Int M/D Fawn - Sydney Royal 14
 1st Junior M/D Fawn - Goulburn Show 14
 1st Junior M/D Fawn - Moss Vale Show 14
 1st Junior M/D Fawn - Canberra Royal 14
 2nd Junior M/D Fawn - Boorowa Show 14
 HC Junior M/D Fawn - Nat Alpaca Show 13

Viktoriya is one of the few medium dark fawn females to be sired by ElySION Jupiter. Her fleece will not disappoint! She carries a soft handling, extremely dense fleece with high frequency crimp across her frame. She will be an asset to the best breeding program. She has great a great personality, excellent fleece coverage and a beautiful head. She is currently mated to Alpha Centauri Comanchee and these two combined should produce an outstanding result.

One of only four females in the auction mated to Comanchee.

Currently pregnant to Alpha Centauri Comanchee LMD 05/05/2014 TBC



Covering Sire
Alpha Centauri Comanchee



Viktoriya
June 2014



Viktoriya Fleece
2014

Do you want to sell your animals at Auction

**But don't have the facilities or number of animals to
conduct your own auction on farm**

Want to market your stud and animals Nationally and
Internationally

Then you need to be part of our next Auction

If you think you might be interested then take the opportunity to talk to us at any time

You can contact us via email at info@acalpacas.com

or phone 0408 410 281 (Andrew) or 0408 410 280 (Bronwyn)

Alternatively catch up with us at the many shows and AAA events that we attend