

Breeders Choice

Alpaca Auction

Online Alpaca Auction

Saturday 18th July, 12 noon



National Alpaca Sale

Our First Ever Online Auction

Stud & Commercial

Genetics Plus

8th Annual BCAA



AuctionsPlus— Fully Online Auction

Contact: Wilson Beer

Nutrien (ex Landmark): 0428 505 520

Information for Buyers

AUCTION START: Saturday 18th July, 2020 Auction –12.00 noon (Midday)

INSPECTIONS: By Arrangements Prior to Auction with Vendors or at Vendors Property on Sale Day

REGISTRATION: Auctions Plus—All prospective buyers must register with Auctions Plus by Thursday 16th July. Ph 02 9262 4222 or @ www.auctionsplus.com.au.

DELIVERY: Animals may remain at Vendors property up to 8 weeks after auction free of charge—or buyers may contact Vendors directly to make private arrangements.

TRANSPORT: Buyers should make their own transport arrangements prior to the auction.

INSURANCE: Buyers to arrange own insurance.

HEALTH: As Per Vendors. Refer to Page 5, 6 & 7. Pics—obtain from vendors.

AAA TRANSFERS: All animal transfers with the AAA will be at the purchasers cost.

STATE HEALTH PROTOCOL: Buyers, please ensure that you are aware of the necessary State Health Protocol required at the destination of your purchase. See Vendors list for Property Health Details.

OPENING BIDS: Minimum opening bid applies: Single Lots—\$400.00; Females with Crias at Foot—\$800.00.

TERMS & CONDITIONS: All stock is offered under standard terms and conditions. These are available from the auctioneers. GST will be charged on top of bid price i.e. \$1500 + \$150 GST.

TERMS OF PAYMENT: For further information contact **Nurtien: Wilson Beer 0428 505 520**. Invoices will be emailed to purchasers by Nutrien Livestock with payment due via EFT within 24 Hours.

BUYING ORDERS: Buyers orders can be placed with Wilson Beer Ph: 0428 505 520.
For those unable to bid online buying orders can be placed with Wilson Beer.

CATALOGUES: All details in this catalogue are provided by the Vendors and whilst all care has been taken in their preparation Nutrien Livestock & Hunter Alpacas accept no responsibility for errors or mis-descriptions herein. Additional catalogues are available from Nutrien .

VENDORS: Details on Page 5, 6 & 7.

Wilson Beer: 0428 505 520 **E:** wilsonbeer@bigpond.com **F:** 03 5482 2750

Ray Attwell: 0428 836 136



Breeders Choice Alpaca Auction

Since 2013

Welcome to the 8th annual **Breeders Choice Alpaca Auction**— an annual event not to be missed on the Australian Alpaca Calendar.

This year, completely outside normal, our Alpaca community has decided to forge ahead, despite these unusual circumstances, and proceed with our **FIRST EVER** online auction! Access the most unique array of animals from the comfort & convenience of your own home.

As the catalogue is amalgamated total lock down applies & we are unable to join together with large gatherings such as BCAA. Unsure of when, or if, we were able to collectively gather for such an event in 2020, the vendors decided not to let COVID-19 rule and therefore

BCAA 2020 Fully Online Auction was formed.

If you Can't Beat Them, Join Them, Adapt to New Ways and thanks to COVID-19 this is what the Alpaca Industry is doing with BCAA 2020 — Going Online.

As we enter our 8th year of operation, our Auction Event is well-known for its focus on quality fleece, diversified genetics, specialised breeding programs & the high quality, specially selected Lots from some of the industry's most prestigious breeders.

The BCAA offers buyers unique access to a diversified range of Alpacas. Think of the variety in genetics, the range of fleeces & styles, and the different coloured selections which will make complementary additions to your herd. Perfect options for the new or experienced breeder. We believe there is something for everyone on offer at this auction.

We welcome Vendors from SA, VIC & NSW at this National Event. 27 Breeders Australia wide have specially selected & made available at auction a total of 75 Lots.

“Be assured all alpacas are presented to sell at this auction.”

These Breeders, all active participants in the Australian Alpaca Industry, represent a community of people who are passionate about what they do and wish to share this passion and support others in the industry, new or old breeders. **BCAA offers everyone an ideal opportunity to purchase sought after genetics at reasonable prices.** Make sure you don't miss an important opportunity such as this!

Many lots are unreserved and others with very sensible reserves, are presented for your consideration. We are very excited for this new format for BCAA 2020.

Many agricultural sectors already run full online auctions and now BCAA has joined them! So join online, from the comfort of your own home or office, with Breeders & Vendors on sale day to participate in this unique industry event!



ONLINE AUCTION EVENT DETAILS

While we can't meet in person on Auction day to inspect & view animals and chat with the Vendors you still have plenty of options to find out more information and get a look at the Lots that interest you prior to Auction Day.

Auction Site / Location : Your own office, lounge room, Vendors Farm or wherever you may be at auction time.

Inspections / Viewing of Alpacas: In person, on Vendors Farms or via live video chat, facetime, etc.—discuss your options with the Vendors directly.

Photos: Catalogue, AuctionsPlus (extra photos posted online, in addition to what is enclosed in this catalogue, e.g. teeth/legs etc), Nutrien Livestock, Vendors Web Sites, Facebook Pages.

Videos: AuctionsPlus, Facebook, ask a Vendor directly for what you are interested in—facetime with an alpaca!

Fleece Samples: Request Vendors to post samples.

Farm Visit: Inspect Alpacas yourself or ask a friend to complete inspections.

Contact Vendors & Ask Questions: By Phone, Email, Facebook etc.

Delivery of Alpacas: All Vendors will allow alpacas to remain on farm up to 8 weeks free. If you require anything additionally please contact Vendors as they are very open to making suitable arrangements.

On-Line via AuctionsPlus — Bid! Bid! Bid!

1. Online— Day of Auction or Pre Bid
2. Phone Bidding or Buying Order – Arranged with Wilson by Thursday 16th July
3. On-Line via AuctionsPlus — Must Pre-Register by Thursday 16th July

To Pre Register with AuctionsPlus -

1. Go to www.auctionsplus.com.au and click signup
2. Enter your info and confirm your email address
3. NOTE: You need to click on dashboard to request approval to Buy/Sell (Approval may take 24-48 hours). Contact: 02 9262 4222 for further information & assistance

Nutrien Livestock Contact: Wilson Beer 0428 505 520 e: wilsonbeer@bigpond.com

Vendors

Aingeal Ridge (Non-Assessed)

1 Reardon Pl, Bungendore NSW 2621
E: jenni@avantia.com.au

Andache Alpacas (Q—15/0449)

Coomooloo, 91 Coomooloo Rd, Bald Hills
PO Box 60, Yankalilla SA 5203
E: susan@yaringaalpacas.com.au

Ashbourne Alpacas

826 Ashbourne Rd, Woodend VIC 3442
PO Box 503, Woodend VIC 3442
E: rebecca@ashbournealpacas.com.au

Aymara Alpacas (Non-Assessed)

Leetham Rd, Mathoura NSW 2710
46 Rutley Cr, Echuca VIC 3564
E: bronwynbeer5@bigpond.com

Booyong Alpacas (Non-Assessed)

2217 Windellama Rd, Quialigo NSW 2580
E: booyongalpacas@optusnet.com.au

Coolawarra / Storybook (Non-Assessed)

PO Box 701, Picton NSW 2571
471 Woodlands Rd, Mittagong NSW 2575
E: australialpaca@gmail.com

Dural Park Alpacas

42 Sydney St, New Berrima NSW 2577
E: kurtduralalpaca@gmail.com

Eaglewood / Adorable Alpacas (Non-Assessed)

156 Isabel Dr, Murrumbateman NSW 2582
E: info@eaglewood.com.au

EP Cambridge Alpaca Stud (MN3—S46)

PO Box 261, Balhannah SA 5242
173 Martins Rd, Oakbank SA 5243
E: lawrence@alpacastud.com.au

Everlast Alpacas (Q—2005/01)

69 Graces Flat Rd, Bowning NSW 2582
E: everlastalpacas@gmail.com

Fern Tree Alpacas (Non-Assessed)

15 Fern Tree Ln, Palmdale NSW
PO Box 183, Ourimbah NSW 2258
E: ferntreealpacas@gmail.com

Forestglen Alpaca Stud (Q—05/0063)

PO Box 62, Millthorpe NSW 2798
Farm: 381 Vittoria Rd, via Millthorpe NSW 2798
E: info.forestglen@gmail.com

Geoff & Jenni Smith

Mob: 0437 257 222
www.aingealridge.com.au

C/- Susan Haese

Mob: 0418 846 271
www.yaringaalpacas.com.au

Rebecca & Darren Hard

Ph: 03 5427 2215 Mob: 0438 756 231
www.ashbournealpacas.com.au

Lewis Beer

Mob: 0428 505 520

Keith & Faye Whitfield

Ph: 02 4844 7267 Mob: 0417 658 730

Mick & Rubey Williams

Mob: 0407 407 618 Mob: 0439 389 994
www.coolawarraalpacas.com.au

Kurt Parker

Mob: 0409 911 298

Robert Harborne

Mob: 0417 998 897
www.eaglewood.com.au

Matthew & Catherine Lloyd

Contact: Lawrence Shapland
Ph: 08 8389 7199 Mob: 0417 828 753
www.epcambridgealpacas.com

Zak & Fiona McGowan-Lay

Mob: 0415 200 768 Mob: 0412 151 750

Sue Tiley

Mob: 0417 462 827
www.ferntreealpacas.com.au

Jennifer Carey & Alexandra Staples

Ph: 02 6368 7223 Mob: 0487 227 068
www.forestglenalpacastud.com.au

Vendors (cont.)

Green Gully Alpacas (Q—05/0002)
89 Brechts Lane, Kentucky South NSW 2354
E: cathyreid@bigpond.com

Greygum Alpacas (Non-Assessed)
619 River Rd, Kialla VIC 3631
E: greygumalpacas@bigpond.com

Hunter Alpaca Stud (Q-05/0048)
537 Louth Park Rd, East Maitland NSW 2323
10 Felled Timber Rd, Oberon NSW 2787
E: prnrtulip@outlook.com

Jandarra (Q—06/0202)
142 Woodlands Ln, Pambula NSW 2549
E: jandarra1@optusnet.com.au

Kurrawa Alpacas (Q—05/0018)
1330 Anglesea Rd, Bellbrae VIC 3228
E: kurrawa@ozemail.com.au

Lillyfield Alpacas (Q—2005/01)
PO Bos 2051, Bowning NSW 2582
69 Graces Flat Road, Bowning NSW 2582
E: lillyfield@bigpond.com

Malakai Alpaca Stud
17 Miners Rest Rd, Miners Rest VIC 3352
E: Malakai@vic.chariot.net.au

Mapa Alpacas (Q—18/0530)
2764 Yass River Rd, Yass River NSW 2582
E: paul@maslensbooking.com.au

Monga Alpacas (Non-Assessed)
PO Box 351, Braidwood NSW 2622
59 River Forest Rd, Monga NSW 2622
E: mongaalpacas@bigpond.com

Patagonia Alpacas (Non-Assessed)
166 Diamond Swamp Rd, Meadow Flat NSW 2795
E: info@patagoniaalpacas.com.au

Rugosa Park Alpacas (Non-Assessed)
78 Binowee Dr, Googong NSW 2620
E: phil-newman@bigpond.com

Signature Alpacas (Non-Assessed)
'Carlowrie' 2044 Grassmere Rd, Condobolin NSW 2877
E: signaturealpacas@esat.net.au

Walkley Fields Alpacas (Q—05/0068)
43 Tierney Rd, Kurmond NSW 2757
E: richardjbrennan@gmail.com

Noel & Cathy Reid
Ph: 02 6778 7449 Mob: 0414 663 541
www.greengullyalpacas.com

Trevis Bird
Mob: 0409 944 972
www.greygumalpacas.com

Peter & Narelle Tulip
Mob: 0412 496 520
www.hunteralpaca.com.au

Robert Crewe
Mob: 0428 598 324
www.jandarraalpacas.com

Robert, Ann & Natasha Clark
Ph: 03 5261 3714
www.kurrawa.com.au

Carolyn Austin
Ph: 02 6227 6224 Mob: 0410 693 802
www.lillyfield.com

Shane Carey
Mob: 0409 270 381
www.malakai.com.au

Paul Maslen & Malcom Gray
Mob: 0417 862 096

Bob Kingwell
Ph: 0488 292 835

Ian Braithwaite & Cathi McMullen
Ph: 02 6359 5036 Mob: 0407 338 823
www.patagoniaalpacas.com.au

Phil Newman
Mob: 0400 620 859
www.rugosapark.com

Debra O'Neill
Ph: 02 6895 7665 Mob: 0447 957 665
www.signaturealpacas.com.au

Richard Brennan
Mob: 0400 477 091
www.walkleyfieldsalpacas.com.au

Vendors (cont.)

Wirritin (Non-Assessed)
940 Charleys Forest Rd, Braidwood NSW 2622
E: mstar1184@me.com

Susan Tyler
Ph: 02 4842 8155

Yaringa Alpacas Pty Ltd (Q—05/0449)
Coomooloo, 91 Coomooloo Rd, Bald Hills SA 5203
PO Box 60, Yankalilla SA 5203
E: susan@yaringaalpacas.com.au

Susan Haese
Mob: 0418 846 271
www.yaringaalpacas.com.au

Support & Sponsorship for 2020 Breeders Choice Alpaca Auction

Thanks to
Hunter Alpaca Stud & The Vendors



Hunter Alpaca Stud — Peter & Narelle Tulip

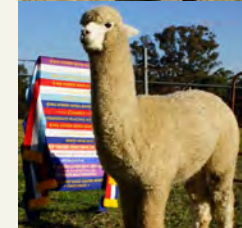
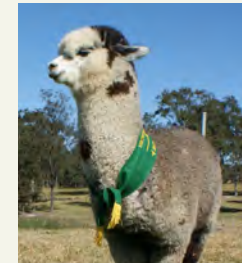
537 Louth Park Rd, East Maitland NSW 2323
10 Felled Timber Rd, Oberon NSW 2787
E: prnrtulip@outlook.com

Mob: 0412 496 520
Oberon: 02 6335 5241
www.hunteralpaca.com.au

Since 1994, producers of huacaya & suri, predominantly specialising in whites, but have not overlooked our coloured Alpaca herd. Many of our bloodlines have been obtained via our trips to South America, thus adding elite advancement to our herd. Producing Alpacas with solid, correct frames, uniform crimp exhibited on highly aligned long staples, extremely bright fleeces of high fibre weight, but maintaining fineness with minimal primary fibre. Over many years our breeding has produced & gained us high level results for both our animals & fleeces. Known throughout the world for our breeding, we are honoured to once again be a part of this auction.



Hunter Excel, Hunter Classic
Caesar, Hunter Eclipse
Elite Stud Males—All Multi
Broad Ribbon Winners



Lot 1. Hunter Le Shaw Solid Light Fawn Female IAR: 219502 DOB: 10.02.19



Sire: Patagonia C. Rising Sun SMF
 Patagonia Sun-Razzle RG
 Patagonia Paparazzo SW

Dam: Banksia Park PWCZulu Warrior SMF
 Forestglen Lilibet RG
 Forestglen Lilianne RG

Mated: Maiden
 Fleece: Nov 19—M 15.8, SD 3.8, CV 24, CF 100%, CRV 38.8

Ultrafine weanling female, uniform in micron and crimp style with exceptional soft handle. Consistency is carried throughout her extremely bright, greasy, well organised bundles of beautiful fawn coloured fleece. Specially selected for sale at this years BCAA as Le Shaw comes from a lineage of superfine coloured genetics. Add her pedigree into your herd's breeding program.

Hunter – Reserved

Lot 2. Monga Charlotte & F/Cria Solid White Female IAR: 292625 DOB: 29.12.13



Charlotte

Cupcake

Sire: Alpacapartners White Cloud
 Monga Atticus SW
 Noble Note Arabella SW

Dam: Belbourie Titan SW
 Monga Charmaine SW
 Belbourie Cherie SW

Mated: Monga Khan SW 22.01.2020
 Fleece: Oct 2019—(6th) M 22.4, SD 5.3, SL 80mm, CF 95%, CRV 41

A 3-in-1 package: Medium framed female 68kg, stable body score, excellent conformation, very soft fleece with fine pencilling, deep amplitude and medium frequency crimp, attentive mother. Includes her 4th cria, Cupcake SW (IAR: 245733, DOB: 28.11.19) with a show quality fleece by Monga Khan & a repeat mating to Khan (awarded Supreme Fleece & Most Valuable Commercial Fleece—Royal Canberra 2014, 2016). Teeth, ears & tail all good. Both are halter trained.

Monga Alpacas—Reserved

Lot 3. Monga Madonna & F/Cria Solid White Female IAR: 202643 DOB: 11.03.14



Marita



Madonna

Sire: Belbourie Logical Choice SW
 Belbourie Brigand SW
 Belbourie Bella SW

Dam: Monga Tobermory W
 Monga Micaela SW
 Andean Park Mistica SW

Mated: Monga Nimbus SW 6.02.2020
 Fleece: Oct 2019—(6th) M: 26.6, SD: 5.2, CL: 70, CF: 81%, CRV: 42

A 3-in-1 package: Large framed female 87kg, stable body score, excellent conformation, soft fleece with fine pencilling, deep amplitude & medium frequency crimp, attentive mother. Includes her 4th cria, Marita SW (IAR: 248676, DOB: 14.12.19) with a show quality fleece by Monga Khan Mated to Monga Nimbus (Supreme Fleece Royal Canberra 2019, Champion Fleece 30-48 months National 2019). Teeth, ears & tail all good. Both are halter trained.

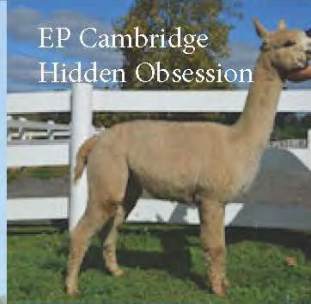
Monga Alpacas—Reserved

EP Cambridge Alpaca Stud

OAKBANK, South Australia *est.1993*

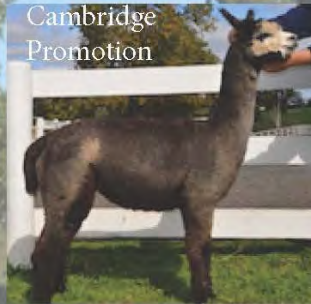
0417 828 753 or 0429 818 595

EP Cambridge
Hidden Obsession

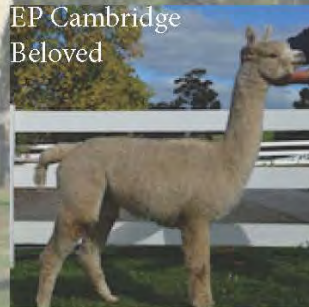


EP Cambridge
INVINCIBLE

Cambridge
Promotion



EP Cambridge
Beloved

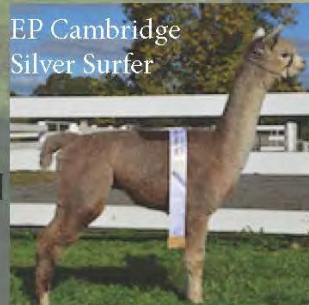


**Meet the Elite Lots EP
Cambridge are offering in
this year's BCCA Online**

Auction.... *18th July 2020*

**Don't Miss Out on buying
some of the best genetics you
will ever come across.....**

EP Cambridge
Silver Surfer



Lot 4. Green Gully Exquisite Solid White Female IAR: 221374 DOB: 1.05.18



Sire: Hunter Excel SW
 Hunter Excalibur W
 Hunter Snow White SW

Dam: Hunter Ramsey SW
 Green Gully Diamond SW
 Green Gully Duchess SW

Mated: Maiden
 Fleece: 2018—M 14.7, SD 3.9, CF 99
 2019—M 16.1, SD 4.5, CF 98.5

This attractive female has a beautifully balanced frame & the gentlest of natures. Her fleece is superbly consistent with well-defined crimp arranged in fine bundling. In her short show career, she achieved 3 Supreme Championships & placed top three in her age class at both Sydney Royal & the National Show. **She is Exquisite!**

Green Gully Alpacas – Reserved

Lot 5. Green Gully Layani & F/Cria Solid White Female IAR: DOB:



Sire: Jolimont Caesar SW
 Jolimont Ramsey SW
 EKC Radiance SW

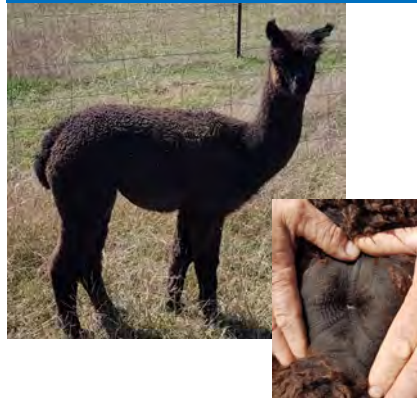
Dam: BarrabindaLord Dijon SW
 Green Gully Lotus SW
 Green Gully Lilly SLF

Mated: Maiden
 Fleece: 2018—M 17, SD 3.4, CF 99.5
 2019—M 16.8, SD 2.9, CF 99.9

Layani's fleece stats speak for themselves. Along with amazing fineness & SD, comes good level of lustre, amplitude & alignment, creating a wow factor that is sometimes lacking in very fine fleeces. Also includes Layani's very nice female cria, Green Gully Laya (IAR: 240804) who is destined to be a stand out in her own right.

Green Gully Alpacas – Reserved

Lot 6. Green Gully Caitlyn Solid Bay Black Female IAR: 240768 DOB: 2.03.19



Sire: Jolimont Tiberio MG
 Jolimont Essien SBlk
 Jolimont Greta II MF

Dam: Coonawarra Gladiator SBB
 Yaringa Classy Miss SBlk
 Alpaca Specialist Classy Lady SBlk

Mated: LMD 25.04.20 Tarraganda Lodge Gaultier MG
 Fleece: 2019—M 20.5, SD 4.33, CF 97.7

Caitlyn is the result of some very reliable black genetics. Her fleece has the density & structure that you would expect from Essien, but with an added level of lustre & softness. She has been mated to Gaultier whose grey progeny have been winning show accolades at both local & national levels. We are anticipating something very special from this mating.

Green Gully Alpacas – Reserved

Lot 7. Signature Pussy Willow Solid White Female IAR: 219190 DOB: 20.03.18



Sire: Cedar House Tijera Hugo
 Cedar House Cooper
 Cedar House Time Piece

Dam: Timbertop Armarni
 Molongolo Zuleika
 Molongolo Xenica

Mated: Open
 Fleece: M 18.0, SD 3.4, CV 19.0, CF 99.7

This is a well conformed young female with a highly aligned high frequency crimped fleece. This young female is ready for joining to a male of your choice or one of the Signature owned males if you prefer. With Armarni and Don Juan on her maternal side and Tijera Hugo on her sires side you are in for a treat with her first cria if mated well.

Signature – Reserved

Lot 8. Coricancha Arcelia Solid White Female IAR: 140020 DOB: 7/5/2009



Sire: Purrrumbete Highlander
 Windsong Valley Iceman
 Purrrumbete Ice Star

Dam: Jolimont Gianfranco
 Graceburn Park Shannon
 Jolimont Lady Penelope

Mated: Open
 Fleece: M 26.4, SD 4.9, CV 18.4, CF 82.8

Arcelia is a smaller framed female who has given me fine cria every time. She has missed being mated with drought over the last few years and it is time to move this worthy girl on to a stud that can take advantage of her breeding and enjoy some very handy additions to a white herd with her pure white line. Arcelia can be mated to a Signature male of your choice.

Signature – Reserved

Lot 9. Signature Aikido Solid White Male IAR: 247350 DOB: 26.04.18



Sire: Winterbrook Prince John
 Signature Puk
 Signature Pagan Queen

Dam: Meadowbank Fletcher
 Signature Mikado
 Signature Meki

Fleece: M 19.6, SD 3.9, CV 18.9, CF 98.9

This young male has a butter soft high frequency crimp with very low primaries and good length. He is holding his fleece stats very well and with Prince John on his sires side and Ultimo on his dams side it is little wonder and he is genetically predisposed to stay fine. All stock have been fed on high feed so his fleece may come back finer this year now that there is grass around. A rare opportunity to purchase a young male with this depth of fine genetics.

Signature –Reserved

Lot 10. Signature Efferre Solid White Female IAR: 188425 DOB: 1.07.14



Sire: Winterbrook Prince John Leandra Ridge Pure Ice
 Signature Quedos Dam: Signature Elation
 Forestglen Querida Alpacapena Joya

Mated: Open
 Fleece: M 28.8, SD 6.0, CV 21.1, CF 64.3

Efferre has Lorimer and Prince John as her grandsires and has bred well for me. The quality of her cria are very stylish and are always well conformed with high frequency well defined long fleece from her sire whose dam has Sonoma in her line. With double Highlander this girl will be of interest to those chasing a white Highlander line.

Signature – Reserved

Lot 11. Storybook Daddy's Little Monster Solid Dark Brown Female IAR: 218184 DOB: 25.08.18



Sire: Regal House Mr Darcy LF Shanbrooke Mercedes MF
 Coolaroo Harlequin Gr/App Dam: Jarrack Park Daria Blk
 Greenvale Angela MG Jarrack Park Radiance Blk

Mated: May 2020 – Milduck Pittsburg
 Fleece: Nov 2019—M 16.7

Daddy's Little Monster is a well grown and upstanding young female. Even in colour and micron, maintaining a soft handle which is carried well into her extremities. She has a high frequency crimp style, with a good level of density for her fineness. She has a classic Regal House Mr Darcy phenotype and her mating to Milduck Pittsburg will only enhance her already impressive stature and fleece traits. Little Monster comes with a live cria guarantee.

Coolawarra / Storybook—Reserved

Lot 12. Coolaroo Designer Moon Solid Med Fawn Female IAR: 238543 DOB: 23.11.18



Sire: Illawarra Yacatan W Starline August Moon W
 Wyndarra Designer W Dam: Coolaroo Donnymoon LF
 Benleigh Olympic Dream Coolaroo Doninka

Mated: May 2020 – Coolaroo Magic Ice
 Fleece: Nov 2019—M 15.5

Designer Moon has a high frequency ultrafine fleece, which is extremely bright, well aligned highlighted with a soft buttery handle. There is little variation between her primary and secondary fibres, allowing her to carry her fleece traits well into her extremities. All of this is carried on a true to type female huacaya frame. With similar fleece traits, her mating to Coolaroo Magic Ice will produce a cria that has a double dose of fineness and density.

Coolawarra / Storybook—Reserved

Lot 13. Storybook Kalahari

SM Fawn Certified Male

IAR: 202594 DOB: 24.08.17



Kalahari is a well conform and super-fine young male. He exhibits supreme alignment, (indicative of his density), matchstick bundles dripping with brightness and an even medium fawn colouring. He carries these superb fleece characteristics on a great frame and also possesses the beautiful Regal House Mr. Darcy phenotype – Kalahari comes ready to work (and also with his ribbons)! His parents were both members of the Coolawarra/Storybook show team; winning multi-championships between them both; while also maintaining exceptional fibre well into their breeding years.



Coolawarra / Storybook—Reserved

Sire: Regal House Mr Darcy LF
Coolaroo Dartesso De Vanesia ETF
Coolaroo Contessa De Venzie LF

Dam: Forestglen Angelo MF
Forestglen Mara Savona MF
Forestglen Masai Mara MF

Mated: Certified Male
Fleece: Nov 2019—M 19.6
2018—M 18.29, SD 3.73, CV 20.4

Show Results 2018—Halter

Moss Vale Show: 2nd Place Junior Medium/Dark Fawn Male
Camden Show: 3rd Place Junior Medium/Dark Fawn Male
Sydney Royal Easter Show: 4th Place Junior Medium/Dark Fawn Male
Hawkesbury Show: 1st Place Junior Medium/Dark Fawn Male
Carousel of Colour: 1st Place Junior Medium/Dark Fawn Male
Mudgee Winter Wonderland: 1st Place Junior Medium/Dark Fawn Male & Reserve Champion Junior Male (to COOLAROO Merlin's Wish)
National Alpaca Show: 5th Place (out of 25) Junior Medium/Dark Fawn Male
Charles Ledger Alpaca Show: 1st Place Intermediate Medium/Dark Fawn Male

Show Results 2019

Gunning Show: 1st Place Intermediate Medium/Dark Fawn Male, Champion Intermediate Male & Best Medium/Dark Fawn in Show
Canberra Royal: 2nd Place Intermediate Medium/Dark Fawn Male & Reserve Champion Intermediate Male
Camden Show: 1st Place Adult Medium/Dark Fawn Male
Sydney Royal Alpaca Show: 2nd Place Adult Medium/Dark Male (to ILLAWARRA Magic Heath)
South Australian Colour Classic: 2nd Place Adult Medium/Dark Fawn Male
National Alpaca Show: 3rd Place Adult Medium/Dark Fawn Male



Kalahari's Sire

Show Results 2019—Fleece

Sydney Royal Fleece Show: 1st Place Intermediate Medium/Dark Fawn Fleece
National Fleece Show: 1st Place Intermediate Medium/Dark Fawn Fleece
Charles Ledger Colour Fleece Show: 1st Place Intermediate Medium/Dark Fawn Fleece & Supreme Medium/Dark Fawn Fleece.

Lot 14. Lillyfield Kaliski Solid Light Fawn Female IAR: 189242 DOB: 03.02.13



Sire: Jolimont Warrior SW EPC Exceed & Excel SW
Lillyfield Alchemy SW Dam: Lillyfield Khatani SLF
Brabant Fairy-Jane Lillyfield Kayhasi SMF

Mated: Lillyfield Gaughin LMD 15/12/2019
Fleece: Nov 19— M 23.1, SD 5.6, CV 23.8, CF 89.6%, Cur 41

Kaliski is from the best of female lines at Lillyfield. She produced a stunning female cria last season, so we are confident she can do it again. All of her parents & grandparents were show champions. She has a magnificent frame – true bone & structure.
Mated to a multiple Supreme Champion again.

Lillyfield – Reserved

Lot 15. Lillyfield Perrin Solid White Female IAR: 201360 DOB: 07.04.14



Sire: Adelyn Highland Mist Timbertop Armani SW
Tilgrove Bentley SW Dam: Zamenhof Milan SW
Purrumbete Desert Queen Zamenhof Jasmine

Mated: Lillyfield Alchemy LMD TBA
Fleece: Nov 19— M 25.2, SD 5.4, CV 21.5, CF 84.2%, Cur 37

Attractive female from a strong Highlander backline – great mum, easy births & produces beautiful cria with real potential. Mated to our Championship winning Warrior son.

Lillyfield - Unreserved

Lot 16. Lillyfield Angel of Harlem Solid Light Brown Female IAR: 252456 DOB: 20.07.19




Sire: F.V. Prince Of Thieves Lillyfield Alchemy SW
Lillyfield Gaughin SLF Dam: Lillyfield Princess of Harlem SDF
Lillyfield Marsheille Lillyfield Chase SDF


Mated: N/A
Fleece: Oct 2019— M 15.8, SD 3.6, CV 22.8%, CF 100%, Cur 40

Angel is a darling weanling female— a beautifully natured show winning junior female from some amazing genetic backgrounds.
She has a lustrous, ultrafine yet dense fleece on a correct frame. 1st Boorowa Show 2020.

Lillyfield – Reserved

Lot 17. Lillyfield Mallory		White Female		IAR:	214567	DOB:	8.04.15
	Jolimont Alessio SW		Blue Grass Bollinger LF				
	Sire:	Forestview PrinceOfThieves SW	Dam:	Lillyfield Lastani SLF			
	Blue Grass Choisi SW		Wongadene Peru. Galina				
<p>Mated: Lillyfield Gaughin LMD 23.04.2020 Fleece: Nov 19— M 24.3, SD 4.8, CV 21.4, CF 84.6%, Cur 36.4</p>							
<p>Productive female producing quality cria – we are confident to supply her to the market. She produces an excellent fleece with a lovely lustre, with commercial length on a compact and correct frame. Mallory births easily & is a good mother. Mated to a multiple Supreme Champion</p>							

Lillyfield – Unreserved

Lot 18. Lillyfield Kerava		Medium Fawn Female		IAR:	214101	DOB:	17.04.15
	Blue Grass Bollinger		F.V. Prince Of Thieves				
	Sire:	Lillyfield UpTheAnteSDF	Dam:	Lillyfield Helsinki SDF			
	Lillyfield Matilda SDF		Lillyfield Hannover SDF				
<p>Mated: Cambridge Showman LMD 23.04.2020 Fleece: Nov 19— M 23.6, SD 3.8, CV 17.8, CF 94.25%, Cur 37</p>							
<p>Kerava is a real princess – full sister to Lillyfield Wild Card. Her sire & dam are both show Champions and her whole family is highly regarded at Lillyfield. She has produced a stunning SLF Female this season who will be retained in the herd. Now mated to Showman for full impact, this male is not available for outside services</p>							

Lillyfield – Reserved

Lot 19. Garibaldi Haitian Queen		White Female		IAR:	214567	DOB:	08.04.15
	Jolimont Warrior SW		Lillyfield Santana SW				
	Sire:	Lillyfield Alchemy SW	Dam:	Garibaldi Havanah SW			
	Brabant Fairy Jane		Garibaldi Eden SLF				
<p>Mated: Lillyfield Up The Ante LMD 23/04/2020 Fleece: Nov 19—M 25.4, SD 5.00, CV 19.7, CF 85.6%, Cur 34</p>							
<p>This is a classy female - Haitian Queen is a very attractive female with great substance of bone and attractive fleece qualities – good commercial length. Last cria is a stunning female being retained in the breeding program. This female would be an excellent addition to any herd. Now mated to our colour impact male</p>							

Lillyfield – Unreserved



MOST SUCCESSFUL NSW BREEDER SYDNEY ROYAL ALPACA SHOW 2018

Walkley Fields Alpacas has been in operation for over ten years, with properties located in the Hawkesbury district at the foothills of the Blue Mountains, and Meadow Flat just west of the Great Dividing Range.



Walkley Field Iridion

Sired by Walkley Field Accolade (Belbourie Moonshine & Shanbrooke Taquiles Standing Ovation). A very advanced fleece style. First fleece at 16.2 micron, SD of 3.4, and an impressive annualised fleece weight of 2.67kg. 2nd Canberra Royal 2019, 3rd Sydney Royal 2019. Also a 1st Sydney Royal 2019 from other Accolade progeny.



Walkley Field Adora

Sired by Bumble Hill Moonraker with Legend genetics and the mighty Shanbooke Taquile on the dam side, a next generation alpaca. Our data is showing us that these big bold crimping fleeces give a heavy-cutting, lustrous and consistent fleece with a slippery cashmere feel to it. Adora is a great example of this.

Our breeding strategy is to produce a softer and silkier cashmere style of fleece with a typically bolder style of crimp. We are proud that these genetics are not only making a statement in the show ring, but also in fleece competitions. At Canberra Royal 2019, Walkley Fields was awarded Champion Junior and Intermediate Fleeces, as well as Champion Brown and Light Fawn Fleeces.

We are taking a scientific, data-based approach to our breeding programme. An animal may exhibit certain traits but is only valuable if it is pre-potent (high probability) for passing those positive traits on to the progeny. As a result, Walkley Fields has a very stable base of elite genetics that are producing beautiful, consistent commercial fleeces.

WE ARE EXCITED TO BE RELEASING A SELECT NUMBER OF
OUR ELITE HERD FOR THE BREEDERS CHOICE AUCTION

PLEASE VISIT US AT

www.walkleyfieldsalpacas.com.au, email at info@walkleyfieldsalpacas.com.au or call on 0438168681 to get more information on stud services and sale animals

Lot 20. Walkley Field Jemima Solid White Female IAR: 241508 DOB: 21.04.18



Sire: Benleigh Legend SW
Bumble Hill Moonraker SLF
Bumble Hill Moonbeam SW

Dam: Belbourie Sorrento SW
Belbourie Jurilique SW
Belbourie Jessamine SW

Mated: Forestglen Catalyst LMD 4.05.2020
Fleece: Nov 2019—M 21.5, SD 4.2, 2.1kg Skirted Saddle Weight

Jemima is a stylish female with a bright, lustrous and very dense solid white fleece. With Benleigh Legend through her sire, Moonraker (follicle density over 65 mm sq.) and Belbourie Jessamine on the dam side (the finest female ever bred in the Belbourie herd) she has inherited the best of both. Shearing over 2kg of skirted saddle, the combination with Supreme Champion Forestglen Catalyst should produce something very exciting.

For more information see www.walkleyfieldsalpacas.com.au

Walkley Field Alpacas—Reserved

Lot 21. Walkley Field Inceltic Solid Light Fawn Female IAR: 241514 DOB: 9.05.18



Sire: Belbourie Moonshine SW
Walkley Field Accolade SW
Shanbrooke Taquille Ovatio SW

Dam: Patagonia Celtic Triumph W
Timbertop CT Infatuation SMF
Timbertop Elle SMF

Mated: Forestglen Illuminate LMD 4/5/2020
Fleece: Nov 2019—M 21.9, SD 3.9, 1.7kg Skirted Saddle Weight

Inceltic is a beautiful light fawn female with genetics to die for in her background. With Belbourie Moonshine, Shanbrooke Peruvian Nano, the famous Shanbrooke Accoyo Taquile, Celtic Triumph & Adelyn Highland Mist. A very consistent fleece with an SD of 3.9 and a skirted saddle weight of 1.7kg, the combination with Supreme Champion Forestglen Illuminate should produce something very exciting. For more information see www.walkleyfieldsalpacas.com.au

Walkley Field Alpacas – Reserved

Lot 22. Walkley Field Legend's Phoenix Solid Light Fawn Male IAR: 227889 DOB: 6.10.17



Sire: Windsong Valley Firedragon SLF
Cambridge Fireproof SLF
Cambridge Validation SW

Dam: Premier Kiwi Legend SW
Kurrawa Legend Sweet As SLF
Kurrawa Sweet She Is SDB

Fleece: Nov 2019—M 18.7, SD 3.5, Skirted Saddle Weight 1.6kg

Legends Phoenix is the first Cambridge Fireproof stud male to be offered for sale. Phoenix has inherited Fireproof's creamy and lustrous fleece. The combination of Fireproof with Kurrawa Legend Sweet As (a Kiwi Legend female) has produced a lovely light fawn stud male. With Firedragon and Legend in his background a very stable set of elite genetics. On his 3rd fleece his micron was holding at 18.7 with a very consistent SD of 3.5. He was Champion Intermediate Male at Moss Vale Show 2019 and as a junior placed 1st at Hawkesbury 2018, and 2nd at Winter Wonderland 2018. For more information see www.walkleyfieldsalpacas.com.au

Walkley Field Alpacas - Reserved

Lot 23. Booyong Sugar Plum Rose Grey Female IAR: 243452 DOB: 11.05.18



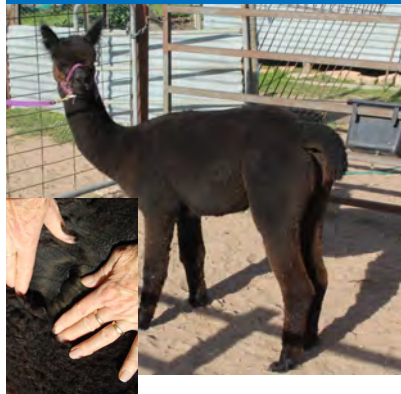
Sire: Booyong Xcalibur Dam: Booyong Summer Rose

Mated: Open
Fleece: 2nd—M 22.3, SD 4.7

Sugar Plum is a well grown girl with lots of strong grey genetics in her background. Sugar Plum has an excellent histogram with a very fine fleece. Sugar Plum is a maiden looking for a handsome grey husband.

Booyong Alpacas—Unreserved

Lot 24. Booyong Rita Solid Dark Brown Female IAR: 236478 DOB: 30.03.18



Sire: Booyong Jett Dam: Booyong Rouge

Mated: Open
Fleece: 2nd—M 22.2, SD 5.0

Rita is a beautiful girl both in looks and nature. Rita has lovely soft bundling fleece, dark brown almost a black. Rita is a maiden ready to mate, she would be an asset to any herd,

Booyong Alpacas—Unreserved

Lot 25. Aymara Lalani Medium Fawn Female IAR: 249226 DOB: 11.11.19



Sire: Patagonia Celtic Triumph WT Blue Grass Star Warrior SLF
Patagonia Celtic Cavalry SMF Dam: Aymara Cordelia SLF
Patagonia Songline ET SLF Aymara Annalisa LF

Mated: Unjoined
Fleece: March 20—M 17.9, SD 4.1, CV 22.9, CF 99.35%

Lalani comes from a very sound fawn genetic background. She has some of the best sires in her Pedigree— Patagonia Celtic Triumph & Jolimont Warrior—and her paternal line is strong also. Her fleece is dense and soft handling, and conformation is correct; being well-grown for her age.

Aymara—Unreserved

Lot 26. EP Cambridge Invincible Solid White Certified Male IAR: 191164 DOB: 23.12.12



Peruvian Sire Jolimont Gianmarco SW
Sire: EP Cambridge Peruvian Spartacus SW Dam: EP Cambridge Showpiece SW
Peruvian Dam Jolimont Verona 2 SW

Male: Certified Male
Fleece: Oct 19 – M 23.2, SD 4.4, CV 19.1%, CF 93.8%, CRV 39.6



His name says it all!!

Son of the internationally renowned sire EP Cambridge Spartacus who has produced Supreme Champion Progeny throughout Australia and Europe including EP Cambridge Navigator (Undefeated Supreme Champion at every show he attended in the UK). Invincible has been a member of EP Cambridge's elite sires since coming of age and after his Champion Adult male win at the 2014 Australian Nationals.

The excitement continues within his Dam's side - EP Cambridge Showpiece. Showpiece is by Verona 2 who has been one of our best breeding females from our Royal Herd. Verona is the dam to Top Account who was exported to the UK and has been standing at stud producing champions for many years. Also, the dam to EP Cambridge Invictus, he too was Australian National Supreme in 2012. Then we have EP Cambridge Firehunter by the same dam as Invincible, not surprisingly also A National Supreme Champion!

This is an extremely rare opportunity to purchase a working stud male from arguably one of the best herds in the world with proven genetics. At EP Cambridge we currently have over 50 cria.



Be sure.
Insure.
With HQ.



(02) 8913 1640
hqinsurance.com.au

**OPTION FOR
LIFE SAVING
SURGERY COVER**



HQ Insurance Pty Ltd ABN 46 091 731 225 AFS Licence Number 235666

Lot 27. EP Cambridge Beloved Solid White Female IAR: 235519 DOB: 13.11.17



Sire: Windsong V. Firedragon
 Eringa P.Show Breaker
 Eringa Park Showtime

Dam: EP Cambridge RiskTaker SW
 Cambridge Anna Bell SW
 Cambridge Myfanwy SW

Mated: Cadillac Jack (USA import male) 05.02.20
 Fleece: Oct 19 – M 16.9, SD 4.6, CV 27.1%, CF 100%, CRV 53.7

Beloved is joined to Cadillac Jack, only the second female we have joined to the USA import males to be offered for sale. Her sire Show Breaker took out the Mature Senior Champion Male at the 2018 Australian Nationals. Also her dam is by Illustrious who has herself become well known for her amazing offspring, one of which is EP Cambridge's superstar stud, Risktaker. Also Spartacus makes an appearance in this highly sort after pedigree. Beloved is a well grown female exhibiting soft, bright bundles of crimp and she oozes presence. This female combined with the future cria she produces especially from this joining is worthy of the best of the best breeders anywhere.

EP Cambridge – Reserved

Lot 28. EP Cambridge Hidden Obsession Solid Dark Fawn Female IAR: 235640 DOB: 05.04.18



Sire: Windsong V. Firedragon
 EP Cambridge Hidden Dragon RN
 Wytterrica Georgianna B

Dam: Jolimont Jaquan MG
 EP Cambridge Obsession DG
 Kerlan Bonita Blk

Mated: Not Mated
 Fleece: Oct 19 – M 15.2, SD 3.6, CV 23.6%, CF 100%, CRV 49

A stunning fawn female who would have a starring role in any breeder's show team. We are obsessed with the quality of this female and have chosen to stop her being hidden away. Her sire Hidden Dragon is a National Champion Colour Supreme in both halter and fleece. She is an overall package worthy of broad ribbons at any show anywhere. Either take her and see her shine in the limelight or wait and show what will no doubt be a show winning progeny.....Don't Miss Out!

EP Cambridge – Reserved

Lot 29. Cambridge Promotion Dark Grey Female IAR: 235596 DOB: 14.02.18



Sire: Blue Grass Waterloo Sunset
 Wytterrica Propaganda
 Wytterrica Dark Eyes

Dam: Morning Star Sirius
 Cambridge Seriously Good
 Cambridge Berri

Mated: EP Cambridge Sonic 10.01.2020
 Fleece: Oct 2019—M 17.1, SD 4.1, CV 24%, CF 100%, CRV 39.4

Promotion promotes herself in every way. A pedigree to brag about including one of the leading grey sires this country has ever seen in Propaganda and Sirius, a stunning evenly coloured silver grey who is doing fabulous things within the EP Cambridge coloured herd. Her fleece shows wonderful brightness and is silky to the touch. Her crimp is highly defined and advanced in style not to mention even from head to toe. She is joined to another of EP Cambridge's grey studs, Sonic who in turn is by Evolution. Promotion really has it all.

EP Cambridge – Reserved

Lot 30. EP Cambridge Silver Surfer Medium Grey Male IAR: 235489 DOB: 03.01.19



Jolimont Warrior SW Wytterrica Propaganda RG
Sire: Windsong V Firedragon Dam: EP Cambridge Silver Tongue
Windsong V. Starbright EP Cambridge Nightshade

Fleece: Oct 19 – M 14, SD 3.1, CV 22.4, CF 100%, CRV 45.9

It is time to ride the wave of these genetics!



EP Cambridge Silver Surfer sired by Firedragon and boasting Propaganda on his dam's side is the combined EPIC genetics one dreams of. Placing third in the class of junior grey males where the eventual Grey Supreme was awarded at last year's Australian Nationals. Silver Surfer has blossomed into an immensely proud, correct teenager. High frequency crimp and super soft to handle.

A RARE chance to own a 'Grey' male by the one and only Firedragon. Cowabunga Dude!!

Lot 31. Fern Tree Lacey

Solid White Suri Female

IAR: 240276 DOB: 23.10.18



Surilana Macusani Lavish ET
Sire: Alabaster Sinbad Dam: Genesis Mozart
Surilana Panama Cedar House Lady Tina

Mated: 13.04.20 to Birrong Okami
Fleece: 2nd—M 19.1, SD 5.2

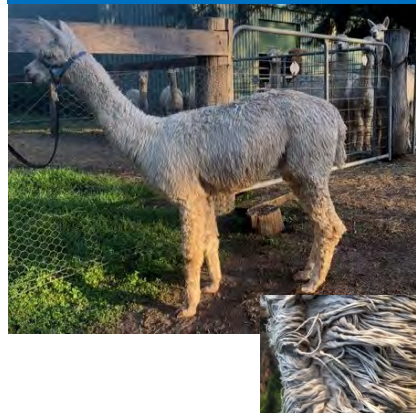
Stylish young female, well grown and mature for age, producing fine lustrous ivory fleece with a lovely handle on a well conformed frame. Currently spitting off to Birrong Okami. She is developing into a lovely breeding female.

Fern Tree – Reserved

Lot 32. Fern Tree Flinders

Solid White Suri Male

IAR: 224324 DOB: 21.12.17



Surilana Macusani Lavish ET
Sire: Alabaster Sinbad Dam: Pinjarra El Nino
Surilana Panama Fern Tree Lily
Elysion Rondine

Fleece: 2nd— M 18.2, SD 4.3
3rd—M 18.6, SD 4.6

Future stud male with excellent genetics and a lovely temperament. Flinders produces fine lustrous stylish fleece with a beautiful handle on a robust frame. Awarded championships in multiple regional shows, judges have commented on his uniformity of fleece coverage, lustrous, flat locked style and lack of guard hair.

Fern Tree – Reserved

Online Bidding

Have You Registered to Bid!!!!

Complete Your Online Registration Now



PATAGONIA
alpacas
Deep crimp by design

Our gallery of



Elite Transcendence

Represented by two of his sons **Lot 71** Elite Grantham (SW) and **Lot 46** Elite Moritz



Royal Kahuna

Represented by Zsa Zsa (SLF) **Lot 70**. Also as covering sire for **Lot 45**

The mark of a sire is his progeny



Bova Minnelli - daughter of Patagonia Celtic Cabaret ET BCAA 2018



MillDuck Rocky 'Junior' - son of MillDuck Uluru

Snowmass males



Velveteer (dec.)

No longer with us but his legacy remains through the stunning Vita **Lot 45**



Absolut Temptation

Youngest Snowmass male & covering sire for Zsa Zsa **Lot 70**

. . and his progeny's progeny

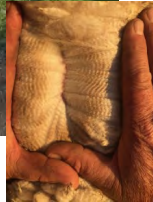


Patagonia VV Keeper of Memories - daughter of Shamarra Shangri-La



Auravale Goldleaf Absolute Rhythm - son of Patagonia Celtic Cadenza BCAA 2019

Lot 33. Grey Gum No Tomorrow Solid White Female IAR: 245051 DOB: 18.10.18



EP Cambridge Risk Taker EP Cambridge Diversity
Sire: Cambridge VirtualReality Dam: Grey Gum Slate
Cambridge Evelyn Grey Gum Ruby

Mated: Open
Fleece: Oct 19 – M 17.0, SD 3.5, CV 20.5

No Tomorrow is a young female with good confirmation, good coverage and carries a very fine, dense fleece. Her bloodline is full of EP Cambridge genetics.

Greygum Alpaca Stud – Unreserved

Lot 34. Grey Gum Smoking Hot Solid White Female IAR: 245056 DOB: 15.11.18



Ep Cambridge Risk Taker EP Cambridge Diversity
Sire: Cambridge VirtualReality Dam: Grey gum High Voltage
Cambridge Evelyn Grey Gum Calcite

Mated: Open
Fleece: Oct 19 – M 15.5, SD 3.2, CV 20.5

We highly recommend Smoking Hot, an Alpaca ready-made for the show ring. She carries a fleece with excellent crimp definition with high frequency and high amplitude fleece style which breaks into fine bundles. The maternal side of this female has produced some of our best Alpacas.

Greygum Alpaca Stud – Reserved

Lot 35. Grey Gum Coffee Medium Fawn Female IAR: 225740 DOB: 19.10.18



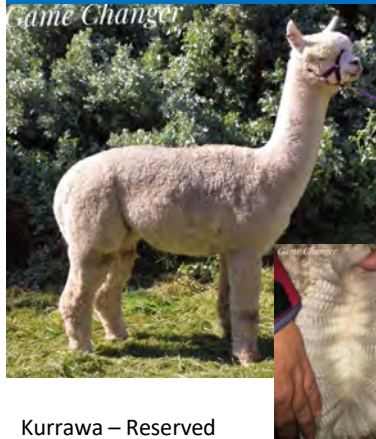
Ep Cambridge Diversity Alpine Regal
Sire: Grey Gum Xtreme Dam: Krystal Park Latte
Grey gum Tequila Krystal Park Angie

Mated: Open
Fleece: Oct 19 – M 19.5, SD 5.0, CV 25.9

Coffee is an attractive young coloured female ready to start her breeding future. She has good conformation with a dense, low frequency crimp style fleece.

Greygum Alpaca Stud – Unreserved

Lot 36. Kurrawa Game Changer Solid White Certified Male IAR: 244556 DOB: 31.08.17



Kurrawa – Reserved

Sire: [Park View Bellows](#) Dam: [Kurrawa Legends Destiny's Child](#)

Fleece: M 20.5, SD 4, CV 19.5, CF 97.5

Game Changers genetics speak for themselves with Premier Kiwi Legend on the dam's side and on the sire's side EP Cambridge Timeout, EP Cam. Per. Amethyst and Jolimont Conquistador. Destiny's Child won the prestigious, most valuable commercial fleece National 2017. Bellows has been shown successfully being awarded Supremes. Game Changer displays a well defined staple with excellent density and soft handle. A highly productive fleece. He has great substance of bone with correct conformation.

More Photos view Facebook & www.kurrawa.com.au

Lot 37. Kurrawa Hollywood Hero SW Certified Suri Male IAR: 227511 DOB: 25.11.15



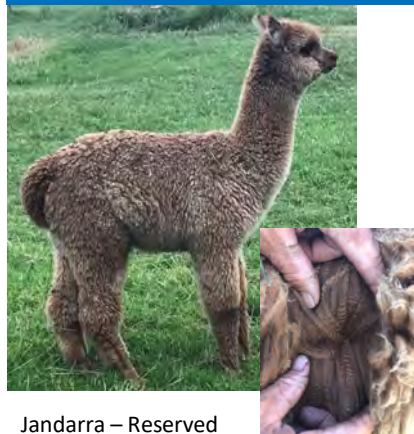
Kurrawa – Reserved

Sire: [Kurrawa Tariq](#) Dam: [Surilana Milady Joanna](#)

Fleece: M: 22.9, SD: 6.6, CF: 89.9

Kurrawa rarely offers this bloodline for sale. Out of Joanna's 30 progeny, 23 including Hollywood Hero have been shown for broad ribbons at major shows. His sire Tariq is a National Supreme winner and has produced many winning offspring. His breeding speaks for himself. His fleece displays excellent lustre combined with great density, advanced lock structure and a silky handle packed on a strong frame. Don't miss this opportunity to secure the last Joanna/Tariq male to be offered. Fleece Photo -4th Fleece. More photos, view Facebook or www.kurrawa.com.au

Lot 38. Jandarra Nutmeg Solid Brown Female IAR: 241434 DOB: 31.10.19



Jandarra – Reserved

Sire: [Jolimont Warrior](#) [Jandarra Midnight Rambler](#) [Jandarra Solitaire](#) Dam: [Banksia Park Zulu Chaser](#) [Warralinga Columbine](#) [Elysion Chanel](#)

Mated: Maiden

Fleece: TBA

Nutmeg is a well grown maiden with excellent conformation and sweet nature. She has a log soft handling dense fleece and a well defined high frequency crimp that is carried into her extremities. Nutmeg carried elite genetics with Jolimont Warrior, Shanbrooke Accoyo Yavari & Banksia Park Zena in her pedigree and would be an excellent addition for the discerning coloured breeder.

Lot 39. Jandarra Kiara Solid White Female IAR: 233222 DOB: 1.04.17



Sire: Snowmass Elite Legend EP Cambridge Per. Spartacus
Snowmass Elite Transcendence Dam: Jandarra Destiny
Spa Alpaca's Per. Sonnet Jandarra Abbella

Mated: Jandarra Buccaneer LMD 6/3/20
Fleece: Oct 17— M 18.6, SD 4.1, CV 22.3
Oct 18—M 19.9, SD 4.1, CV 20.8

Perfectly proportioned pregnant female with an elite genetic mix. Sired by the highly awarded imported Stud Sire, ILR Snowmass Elite Transcendence x Jandarra Destiny (EP Cambridge Peruvian Spartacus x Jandarra Abbella- National Intermediate Female Champion 2006). Kiara has a very bright broad crimping fleece. Joined to Jandarra Buccaneer whose progeny collected ribbons 2016 & 2018 National.

Jandarra – Reserved

Lot 40. Forestglen Dolce Vita Solid White Female IAR: 240184 DOB: 9.04.19



Sire: Forestglen Maestro SW Banksia Park VCK Colorado SW
Forestglen Angelo SMF Dam: Forestglen Aria SW
Forestglen Anatola SW Forestglen Alouette SW

Mated: Maiden
Fleece: TBA

Dolce is a sweet natured, attractive young female with a balanced & correctly proportioned frame. Her pedigree includes Maestro, El Dorado, Allin Capac & Inti. Her sire Angelo is a multiple supreme champion.

She displays a bright fleece with a small crimp style that is beautifully consistent across her body.

Forestglen – Reserved

Lot 41. Forestglen Candescent Solid Light Fawn Female IAR: 240190 DOB: 12.03.19



Sire: Ambersun Fortune Seeker Forestglen Angelo SMF
Ambersun Fortune of Monaco Dam: Forestglen Candy Floss SLF
Ambersun Lady Grace Forestglen Fairy Floss SLF

Mated: Maiden
Fleece: TBA

A well grown female, Candescent is the first Fortune of Monaco progeny offered for sale. Her pedigree includes Warrior, Maestro, Minty, El Dorado, CH Brave Heart, Inti, Shanbrooke Elite, Brigantine, Ledgers Dream & Highlander.

She has only been shown once and was awarded 2nd place in her Junior Female class at Charles Ledger Show last year.

Forestglen – Reserved

Lot 42. Rugosa Park Pippy & Gubby SW Female & Certified Male IAR: 235963 DOB: 24.04.18



Rugosa Park Alpacas—Reserved

Sire: Rugosa Park Lord Trinian
 Rugosa Park Foray
 Maruluka Thea

Dam: Rugosa Park Lord Trinian
 Rugosa Park Gretal
 AOZ Chardonnay

Certified Male: Rugosa Park Gubby IAR 174702, DOB: 2.12.11
 Mated (Female): Rugosa Park Daktari
 Fleece: Pippy—M 18, SD 3.7

Diversify your genetics with this great SW package!
 Young female Pippy (IAR: 235963, DOB: 25.04.18) from SRS Halcyon Popover lineage, mated to ultrafine SD improving Daktari, with a Lord Trinian Stud male. Stud male Rugosa Park Gubby is proven & certified. Progeny average fleeces M 17 and SD 3.8.

Lot 43. Rugosa Park Maximus Solid White Male IAR: 210381 DOB: 14.05.16



Rugosa Park Alpacas—Reserved

Sire: Rugosa Park Lord Trinian
 Rugosa Park Gubby
 Rugosa Park Dolly

Dam: Halcyon Popover
 Rugosa Park Delila
 Eldorado Sapphire Queen

Fleece: M 17, SD 3, CF 100

2 SRS recommended males in lineage. Well grown, handsome, fine & ready for certification. Beautiful fleece style & structure. Good natured. Will lower micron & SD in your herd.

Lot 44. Rugosa Park Impress & F/Cria Solid White Female IAR: 187165 DOB: 19.03.13



Rugosa Park Alpacas—Reserved

Sire: Chachani Picaro
 Rugosa Park Lord Trinian
 Crystal Glen Moonbeam

Dam: Halcyon Popover
 Rugosa Park Delight
 Aureate Variety

Mated: Rugosa Park Helix SW, Due April 2021
 Fleece: M 19.2, SD 3.8, CF 99.2

Impress carries a bright soft fleece as a result of 2 SRS sires each side of her lineage. Female cria Rain (IAR: 235982, DOB: 10.02.20) shows a remarkably dense, lustrous fleece with deeply crimping, thin staples. Impress is re-mated to Rugosa Park Helix to repeat this excellent result.

Lot 45. Patagonia VV Vita

Solid Dark Brown Female

IAR: 217964 DOB: 5.06.19

This little stunner, VV Vita, a dark brown Snowmass Velveteer daughter, is the baby of our 2020 selection, but she deserves to be taken seriously! Due to COVID-19 restrictions, Vita has only been able to attend one show so far - a local show of just over 100 animals. But at only eight months of age, she impressed the judges and spectators alike - working her way up to Grand Champion Female and Best Brown. What's there to like about Vita? Quite a lot! She has a sound strong frame, a high level of lustre and well aligned high frequency staple, indicative of a high level of density. Our Velveteer daughters will be closely held. This is our first Velveteer daughter to go to auction. With her dam Victoria being a Patagonia Celtic Rising Sun daughter, Vita provides a rare opportunity to access a combination of impeccable coloured genetics. Vita will be of mating age at auction time and she is offered with a mating to Snowmass Royal Kahuna who has been consistently producing magnificent browns, such as MillDuck Uluru a.k.a. 'Rocky', when mated to females with strong brown/ fawn genetics. An opportunity not to be missed!

Show Results

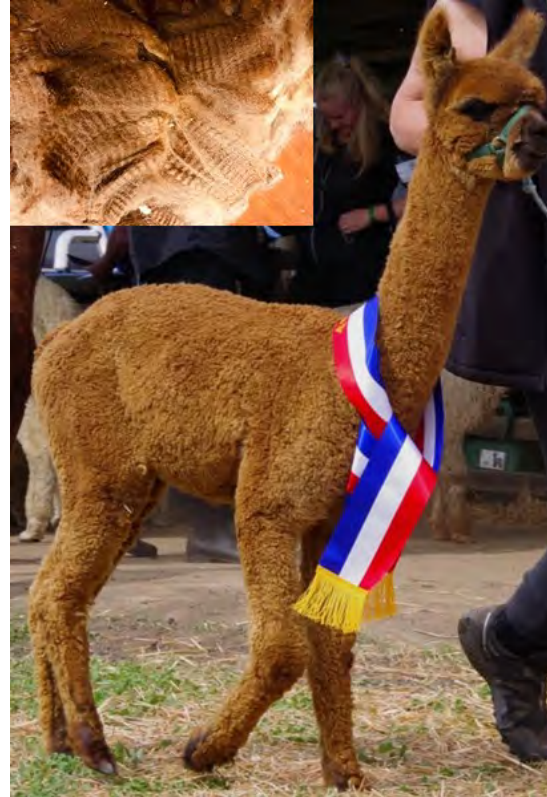
1st place Junior Female Brown
Champion Junior Huacaya Female
Grand Champion Huacaya Female
Best Brown 2020 Gunning Show

Patagonia—Reserved

Sire: Snowmass Velvet Touch MP
ILR Snowmass Velveteer DF
Snowmass Royal Divinity LB

Dam: Patagonia Celtic Rising Sun ET
Patagonia Victoria SDB
Patagonia Goldie SMF

Mated: Offered with mating to ILR Snowmass Royal Kahuna
Fleece: Nov 19 (1st) - M 15.9, SD 3.5, CV 22.1, SF 15.6, CF 100%,
Cur 35.9



To celebrate 5 years since the arrival of our first fantastic pair of Snowmass males, Elite Transcendence & Royal Kahuna, we are excited to be offering an ALL STAR cast in the 2020 Breeders Choice Alpaca Auction. Our selection of four elite export quality animals (Lots 45, 46, 70 & 71) across a range of colours and genetics, showcases the results of our breeding decisions in recent years and the infusion of elite Snowmass genetics into our herd.

You can buy online from Patagonia in this auction with confidence because:

All our animals presented here have proven themselves in the show ring.

The males we offer are certified and have confirmed pregnancies.

Fleece tests were taken from all 4 animals in May 2020 and results will be provided on our website.

Our fleece statistics reflect genetic fineness (from animals run on lush pastures) so you shouldn't expect big surprises when these animals go to new environments. A clear example of this is Patagonia Celtic Rising Sun owned by Shamarra in NZ. <http://www.shamarra-alpacas.co.nz/alpacas/stud-males/patagonia-celtic-rising-sun-et/>

An experienced alpaca vet will inspect each of our four lots in the week leading up to the auction and

Lot 46. Patagonia Elite Moritz Solid Dark Fawn Male IAR: 217967 DOB: 13.04.17

Patagonia Elite Moritz is one of our up and coming young stud males. He is certified with confirmed pregnancies on farm. He is the first coloured male progeny of our Snowmass imports to go to auction.

Moritz is a very even coloured dark fawn male. His sire is Snowmass Elite Transcendence and his dam is one our top coloured ET donors, Patagonia Midnight Sun (SDB). She shares a dam with the legendary fawn male (now resident in NZ) Patagonia Celtic Rising Sun.

Moritz's fleece, reflecting the characteristics of his sire, is superfine, extremely long and lustrous, with a high frequency crimp right to the tip. His fleece length, on his 3rd fleece, is still a very impressive 120mm. He carries this quality fleece on a square sturdy frame

Show Results

1st Medium/Dark Fawn Adult Male at Hawkesbury Show 2019, Victorian Colour-bation 2019 & Winter Wonderland 2019 Reserve Champion Adult Male—Winter Wonderland 2019

2nd Medium/Dark Fawn Skirted Fleece 18-30 Months—Royal Melbourne 2019

1st Medium/Dark Fawn Skirted Fleece 30-48 Months—Royal Canberra 2020

Sire: Snowmass Elite Legend W
ILR Snowmass Elite Transcendence W
SPA Alpacas Peruvian Sonnet W

Dam: Jolimont Caesar SW
Patagonia Midnight Sun ET SDB
Patagonia Sunline SDF

Fleece: Nov 19 (3rd) - M 20.2, SD 4, CV 19.8, SF 19.5, CF 98.4%, Cur 40.9



An ideal male to add length, lustre & fineness to your coloured herd!

Patagonia—Reserved

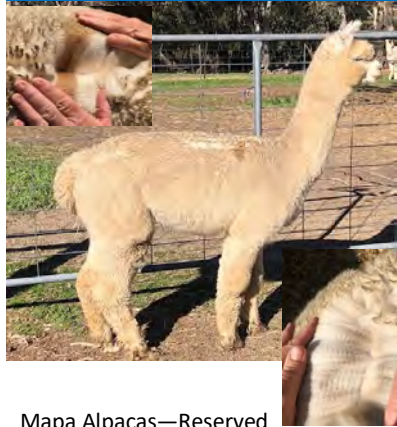


Need to agist your purchases until life becomes a bit more certain? Our 92 hectare property is ideal alpaca country, located just a few hours from Sydney—but at 1,000 metres so low humidity, good rainfall and a great climate for alpacas & people.

For overseas buyers we are offering free agistment* until 30 June 2021 on Patagonia animals purchased in this auction. For local buyers a three month free agistment* period is offered.

*Conditions apply. Please contact Cathi or Ian at info@patagoniaalpacas.com.au to discuss your needs.

Lot 47. Mapa Silk Lining Light Fawn Female IAR: 245694 DOB: 22.01.19



Sire: Premier Kiwi Legend
 Kurrawa Legends Challenge
 Kurrawa Drama Queen

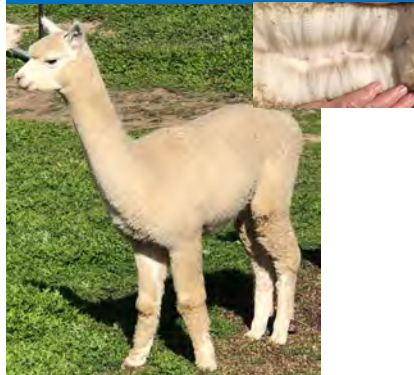
Dam: Swan Valley Accoyo Sila
 Banksia Park Satin n Lace
 Banksia Park Ivory Silk ET

Mated: Grey Gum Classified LMD 23.04.20
 Fleece: M 16.8, SD 3.8, CV 22.8, CF 100%

Silk Lining has a strong frame with correct conformation & true to style. She has an ultrafine fleece, medium to high frequency crimp with lustre and a commercial length. She does however, have a spot on her back which is shown in the picture. She is from WA background and would make a great investment.

Mapa Alpacas—Reserved

Lot 48. Mapa Lucky Star Solid White Female IAR: 245700 DOB: 14.12.18



Sire: Rosedeane Sayonara
 Futura Momentum
 Futura Chiffon

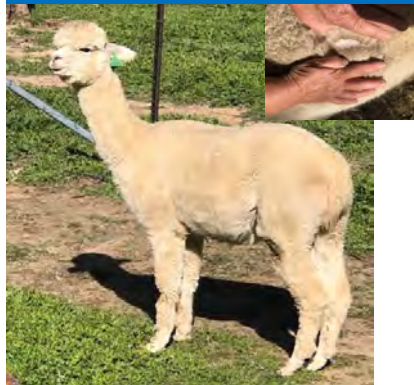
Dam: Tilgrove Bentley
 Everlast Brightest Star
 Everlast Harmony

Mated: TBA
 Fleece: M 17.2, SD 3.1, CV 17.9, CF 100%

Another ultrafine fleece with an enviable SD all on a well grown girl. She has a high frequency fleece style producing excellent length. She will be mated prior to the auction.

Mapa Alpacas—Reserved

Lot 49. Stansfield Park Gaea Solid White Female IAR: 176336 DOB: 7.12.11



Sire: Somerset Accoyo Challenger
 Banksia Park Pure Afterglow ET
 Banksia Park Peruvian Destiny

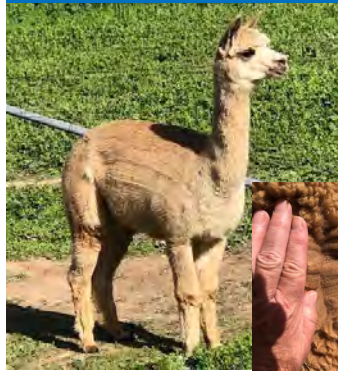
Dam: Encantador Alpine Flame
 Rosetta Athena
 Rosetta Jaynie

Mated: N/A
 Fleece: M 25.5, SD 4.8, CV 18.8, CF 86.2%

This attractive girl has a well-covered bonnet and has a balanced frame. Although her fleece is a little dirty in the picture, it is displaying excellent lustre on the skirting table. She had a female cria last year and was a good mum from start to weaning.

Mapa Alpacas—Unreserved

Lot 50. Goldleaf Serene Waterlily Medium Fawn Female IAR: 202698 DOB: 22.04.13



Sire: [Purrumbete El Dorado](#) [Blaydon Stormcloud](#) [Willows Rd Cloud](#)
 Dam: [Pentland Burraneer](#) [Goldleaf Serene Monet](#) [Goldleaf Serene Flair](#)

Mated: [Plantel Shabaka, LMD 19.04.20](#)
 Fleece: M 19.3, SD 3.4, CV 17.8, CF 99.2%

Waterlily is from WA genetics and has a nice frame and medium frequency fleece. She also births easily and is a good mother, without any issues. If you're after a medium fawn then she is worth your consideration. She is mated to Shabaka here and given his past results we would expect a LF or Medium coloured cria.

Mapa Alpacas—Unreserved

Lot 51. Eaglewood Claude Rose Grey Male IAR: 230644 DOB: 11.03.17



Sire: [Waterloo Sunset](#) [Wyona Sunset Avenue](#) [Eaglewood Caliente](#)

Fleece: 2019—M 22.6, SD 4.1, CF 95.5, CRV 36.9
 2018—M 20.7, SD 4.0, CF 96.4, CRV 39.9

Claude is a magnificent upstanding Rose Grey male carrying a beautiful lustrous crimped fleece. Very even rose grey. Shown successfully winning many ribbons: 2nd Sydney Royal 2018 behind Champion grey of show. Will make an excellent herd sire. 2nd dam is Eaglewood Courtney winner of over 30 Championships.

Eaglewood— Reserved

Lot 52. Incamon Nilani Medium Grey Female IAR: 228054 DOB: 20.01.17



Sire: [Vista Azulo MG](#) [Maison Mauve Buttercup BI](#)

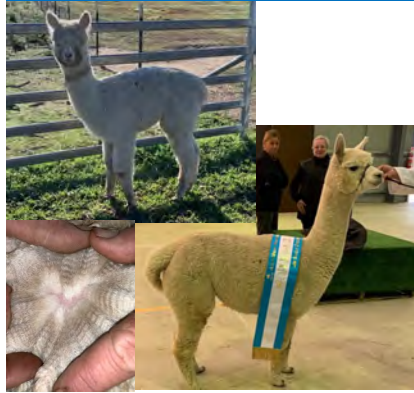
Mated: [Vista Morty \(son of Rigel\)](#)
 Fleece: 2019—M 20.6, SD 4.3, CF 97.3, CRV 40.8
 2018—M 17.8, SD 3.9, CF 99.7, CRV 41.6

Nilani has a beautiful high frequency, very soft handling fleece. She is an excellent mum & has a stunning medium grey male cria at foot (DOB 24.02.20) sired by Eaglewood Maximus (Sire of Eaglewood Hero—Champion Grey Sydney Royal 2019) he is potential show quality.

Fleece weight for Kylie in 2019 was 1.8kg skirted. She is exceptionally well-bred with grandsire Ekeko. She came 2nd in large class at Mudgee 2018.

Eaglewood Alpacas—Reserved

Lot 53. Eaglewood Kylie & F/Cria Solid White Female IAR: 230654 DOB: 28.04.16



Sire: Softfoot Galloway Dam: Alpacapena Kindihannah
Mated: Sunline Optimus (multiple supreme champion), April 2020
Fleece: 2018—M 18.5, SD 3.7, CF 99.5, CRV 48.9
2017—M 16.2, SD 3.3, CF 100, CRV 49.7

Kylie is an elite female. She is extremely fine & has excellent genetics on both sides—her grandsire is Benleigh Lorrimar. She is still displaying an extremely crimped & stylish fleece which she has passed onto her female cria included in this offer. The female cria, Katlin (IAR: 244911, DOB: 23.02.20) is extremely lustrous & displaying beautiful fleece attributes. The cria is by Yenaminut Cassanova, an Amadaeus son. Kylie has had an extremely successful show career—Reserve Champion at both Mudgee Regional Show & Charles Ledge 2019 & Reserve Champion Adult Female at Canberra Royal 2019.

Eaglewood Alpacas—Reserved

Lot 54. Adorable Nami Dark Grey Female IAR: 187998 DOB: 8.04.13



Sire: Natural Allure Thalkurri Dam: Kuanza Deeze MG

Mated: Yenaminut Morty Dg, April/May 2020
Fleece: M 25, SD 4.3, CF 90.8

Nami is a lovely type and has an extremely soft fleece. The fleece has very little primary fibres. She has a beautiful dark grey male cria at foot by Eaglewood Maximus. The male cria is displaying a highly aligned fleece and has excellent conformation—potential show quality. Additional mating is available at half price. Nami was shown winning 3rd place at Sydney Royal in 2015.

Adorable Alpacas—Reserved

Lot 55. Andache Khan Dark Fawn Certified Male IAR: 191706 DOB: 2.04.13



Sire: Yaringa Czar Dam: Ambersun Hayley

Fleece: 6th— M 22.7, SD 3.7, CRV 47.1

Andache Khan is a solid boned male with pleasingly consistent colour for a fawn. His density, micron for age & low SD are to be commended. Khan is the son of Yaringa Czar (Reserve Champion Mature Male 2013 AAA National & Sure if 2019 Huacaya of the Year for SA). Lightly shown—best halter results were 2nd Adult MD Fawn Male 2016 AAA National, 1st Adult Brown Male 2016 Victorian Colour-ration, Champion Brown Fleece Royal Adelaide Show 2014. As Andache are primarily white breeders, Khan has been underutilised.

His sole cria, a brown female born in 2017, has been retained in the Andache herd.

Further details are available from www.yaringaalpacas.com.au

Andache Alpacas – Reserved

Lot 56. Malakai Ashbourne Sintilation

Solid White Female

IAR: 247662 DOB: 22.09.19



Sire: Malakai Fire Chief ET

Dam: EP Cambridge Sin City

Mated: Weanling

Malakai and Ashbourne are proud to offer this high quality daughter of the 2017 National Supreme Champion EP Cambridge Sin City.

Sin City is the only female in Australian history to have won Champion Junior, Champion Intermediate Champion Adult and Champion Mature female as well as her National Supreme title.

These genetics are rare and unsurpassed, today's offering of Sintilation offers the astute breeder a chance to leap their breeding program straight in to the forefront of modern day elite genetics.

Adding to these top class genetics is her sire Malakai Fire Chief who's progeny have won an astonishing 64 championships and 16 supreme titles over the past two showing seasons.

Sintilation has an extremely uniform fleece with a deep amplitude crimp carried on a well grown and robust frame.

Don't miss this exciting rare opportunity to add these outstanding bloodlines to your breeding program.



Malakai – Reserved

Lot 57. Malakai Serenade

Medium Grey Female

IAR: 243712 DOB: 20.06.19



Sire: Autumn Gold Galileo

Dam: Malakai Renata

Mated: Maiden

Fleece: M 16, SD 4.1, CV 25, CF 100%, CRV 39.5

Serenade is a beautiful medium grey female with a uniform deep amplitude crimp. Her dam is the product of our elite embryo transfer program and her sire, Autumn Gold Galileo, is our new multiple Champion grey. Serenade has an eye catching presence with her whole breeding career ahead of her.

Malakai—Unreserved

Lot 58. Malakai Mahica ET Solid Medium Br Female IAR: 243620 DOB: 19.11.18



Sire: Bluegrass Waterloo Sunset Dam: Classic Yaringa Maharani

Fleece: M 19.0, CV 19.5, CF 98.7, CRV 36.3

Mahica is an ET daughter of the very successful Classic Yaringa Maharani. This line is producing some outstanding coloured animals.

Sired by World renowned Blue Grass Waterloo Sunset, this female offers loads of opportunity to enhance your coloured breeding program. Mahica has a beautiful high frequency crimp with great lustre and fineness. Included is a mating to any grey sire at Malakai.

We will be sorry to see this female go.

Malakai—Unreserved

Lot 59. Ashbourne How Fortunate Solid White Female IAR: 239077 DOB: 3.01.18



Sire: Malakai Lets Rock ET Dam: Ambersun Good Fortune

Fleece: 2019—M 16.3, SD 3.8, CRV 54.3
2018—M 16.0, SD 3.6, CRV 47

We are pleased to announce the release of one of our finest female lines. A beautiful upstanding white female with exceptional fleece characteristics, that are underpinned by her pedigree. This young girl has her breeding days in front her through genotype & true phenotype traits to back her success. She is currently being mated to one of Ashbourne's newest stud males Ashbourne THE HIPSTER. Which should produce a very exciting combination. Mating date to be confirmed. As we were told in the early days of breeding, foundation girls of exceptional quality are difficult to secure and this offer represents the chance to secure rarely released proven genetics.

Ashbourne—Unreserved

Lot 60. Vista Manolo ET Rose Grey Certified Male IAR: 202096 DOB: 07.06.14



Sire: Blue Grass Waterloo Sunset Dam: Timbertop Milla

2017: M 25.8, SD 5.0, CV 19.5%

Manolo carries a well balanced frame and is a very true to type huacaya with a super dense fleece showing excellent alignment and even rose grey colour. Manolo has show winning cria and an incredible show record of his own. He is being offered for unreserved sale as we have decided not to keep a coloured male. Free agistment for up to 3 months after travel restrictions are lifted.

Aingeal Ridge – Unreserved

Lot 61. Yaringa Rhythm & Blues Silver Grey Certified Male IAR: 211397 DOB: 1.02.16



Sire: [Greenvale Rocco ET](#) Dam: [Alpacaspecialist Reign Dance](#)

Fleece: [M 25.3, SD 4.6, SL 85, CRV 36.3](#)

Bred to bring new genetics into the Yaringa herd, Rhythm & Blues has an exceptionally consistent fleece in style, colour and micron. Rhythm's first batch of cria are on the ground and a second batch is on their way so Rhythm is now surplus to our requirements. Highly fertile male. Rhythm was only lightly shown with best results 1st Senior grey male 2018 AAA National Show, 1st Senior grey male 2019 Carousel of colour.

Further details available from www.yaringaalpacas.com.au

Yaringa Alpacas—Reserved

Lot 62. Yaringa Prince Nari ET SL Fawn Certified Male IAR: 211424 DOB: 27.02.16



Sire: [Shanbrooke Simply The Best](#) Dam: [Classic Yaringa Maharani](#)

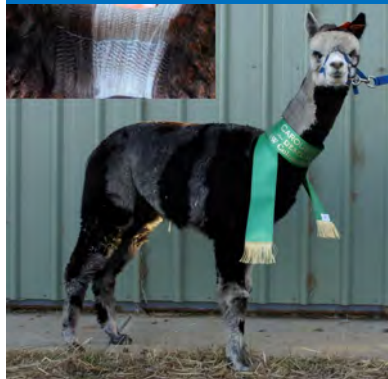
Fleece: [M 22.3, SD 4.7, SL 21.3, CRV 44.8](#)

Nari, a product of Yaringa's elite embryo transfer program, has a pedigree that represents the best genetic lines in the Yaringa herd. The lineage includes a range of colour from white through to black & many championship winners. His full sisters are producing well in our herd. Nari's first drop of cria have hit the ground & we are pleased with them – fawns & whites from fawn females. Nari's fourth fleece, however, is starting to show a significant quantity of black fibre (probably not surprising given Coonowarra Gladiator is his grandsire), suggesting he could become a very valuable outcross in a grey herd.

Further details are available from www.yaringaalpacas.com.au

Yaringa Alpacas—Reserved

Lot 63. Yaringa Silver Storm Grey Female IAR: 229450 DOB: 22.01.18



Sire: [Yaringa Silver Streak ET](#) Dam: [Yaringa Tempest](#)

Mated: [LMD 3.04.20 —Yaringa Rhythm & Blues](#)

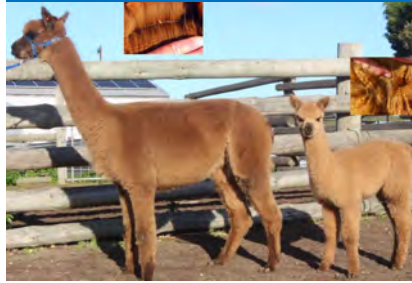
Fleece: [M 18.7, SD 3.6, SL 110, CRV 38.3](#)

Yaringa Silver Storm is a striking patterned silver grey female. She was sired by Yaringa Silver Streak ET who was exported to New Zealand. She made a brief yet notable appearance in the Yaringa Show team including 5th Junior Grey Female 2018 AAA National Show, 2nd Junior Grey Female 2018 Royal Adelaide Show, 2nd Intermediate Grey Female & Reserve Champion Grey Female 2019 Carousel of Colour.

Further details available from www.yaringaalpacas.com.au

Yaringa Alpacas—Reserved

Lot 64. Yaringa Charlene & F/Cria Roan Female IAR: 225923 DOB: 25.02.17



Sire: [Canchones Ferrari Black ET](#) Dam: [Yaringa Queen Charlotte](#)

Mated: Open—purchase includes mating to Yaringa male of your choice

Fleece: M 23.2, SD 5.1, SL 80, CRV 42.3

Yaringa Charlene is offered for sale with female cria Yaringa Chamari at foot (IAR: 240729, DOB: 17.03.20). Chamari is sired by our brown superstar Yaringa Commander ET who is proving to be one of the most exceptional males we have bred. Charlene dropped right at the end of our breeding season and has not been mated since having her cria. With a mating to your choice of Yaringa males, this makes Charlene an exciting 3-in-1 package. Further details are available from www.yaringaalpacas.com.au

Yaringa Alpacas—Reserved

Lot 65. Yaringa Black Minx Solid Black Female IAR: 229411 DOB: 16.12.17



Sire: [Yaringa Black Watch](#) Dam: [Yaringa Queen Isobella ET](#)

Mated: [Yaringa Commander ET—LMD 21.02.20](#)

Fleece: M 24.7, SD 4.7, SL 90, CRV 28.2

Black Minx was the very first cria sired by Yaringa Black Watch. Minx is Blue-Black, dense and with an exceptional handle to her fleece.

The Black Watch/Commander cross appears to be incredibly successful and we would be expecting the resultant cria to be something special.

Further details are available from www.yaringaalpacas.com.au

Yaringa Alpacas—Reserved

Lot 66. Everlast Echo Beach Solid Med Fawn Female IAR: 189049 DOB: 25.05.14



Sire: [Running Creek Tirawa SW](#) [Blue Grass Bollinger LF](#)
[Running Creek Frontera SLF](#) Dam: [Everlast Hip Hop LB](#)
[Running Creek Hopi W](#) [Everlast Harmony SDF](#)

Mated: [Lillyfield Up The Ante LMD 23/04/2020](#)

Fleece: Oct 2019—M 23.1, SD 4.5, CV 19.5%, CF 93.7%, Cur 46

Echo is from one of the finest lines in the herd, she consistently produces fine cria with excellent fleece structure. Now mated to Up the Ante to increase fleece length.

Everlast – Unreserved

Lot 67. Everlast Catch 22 Solid Light Fawn Female IAR: 230994 DOB: 13.11.16



Blue Grass Bollinger Running Creek Frontera
Sire: Lillyfield Up The Ante Dam: Everlast Echo Beach
Lillyfield Matilda SDF Everlast Hip Hop

Mated: Lillyfield Dublin LMD 20.11.2019
Fleece: Nov 19— M 21.8, SD 4.2, CV 19.1, CF 96.5%, Cur 49

Attractive female sure to produce a quality cria. Comes with great credentials and produces a productive commercial fleece. High frequency crimp with lots of lustre on a superb frame from one of our top stud males.

Everlast – Reserved

Lot 68. Everlast Ice Ice Baby Solid Med Fawn Female IAR: 130543 DOB: 28.06.11



Jolimont Alessio SW Blue Grass Bollinger LF
Sire: ForestviewPrinceOfThievesSW Dam: Everlast Vanilla Ice SLF
Blue Grass Choisi SW SomersetPeru.LaceSymphonySW

Mated: Lillyfield Up The Ante LMD 23.04.2020
Fleece: Nov 19— M 21.7, SD 4.4, CV 20.3, CF 95.9%, Cur 49

Pretty female maintaining an excellent micron, is a great mum producing stylish cria. Great bone, true to type frame. Was successful in the show ring as an intermediate in both led & fleece classes. Now mated to our colour impact male.

Everlast – Unreserved

Lot 69. Everlast Wicked Game Light Fawn Female IAR: 189047 DOB: 22.03.14



Jolimont Warrior SW Jolimont Romeo SW
Sire: Lillyfield Alchemy SW Dam: Meadow Bank Revival Rach SW
Brabant Fairy-Jane Jolimont Rina SW

Mated: Lillyfield Gaughin LMD 23.04.2020
Fleece: Nov 19— M 25.6, SD 4.5, CV 17.6, CF 87.4%, Cur 43

This well-built female has exceptional genetics & has produced 3 attractive females for the Everlast herd. Mated now to a multiple Supreme Champion, she is sure to produce a worthwhile addition. Great mum, heaps of milk.

Everlast - Unreserved

Zsa Zsa is a magnificent light fawn Kahuna daughter from Celtic Sasha, one of our top Celtic Triumph donors. Her soft handling fleece has a high frequency, deep horseshoe crimp right to the tip and the 'bounce' associated with the best Celtic Triumph and Kahuna progeny. While Zsa Zsa has an imposing presence, she has a very quiet temperament.

Sire: ILR Snowmass Royal Kahuna W
Snowmass Conopa's Kahuna
Snowmass Royal Wedding
Dam: Patagonia Celtic Sasha W
Patagonia Celtic Triumph W
Jolimont Sabi SW

Mated: Snowmass Absolut Temptation W, LMD 4.12.19
Fleece: Nov 2019 (2nd) - M 19.2, SD 3.7, CV 19, SF 18.5, CF 99.1%, Cur 46.5

She has been scanned pregnant to Snowmass Absolut Temptation (LMD 4.12.19), the youngest of our Snowmass boys. His fleece is spectacular in terms of lustre, bundling and low micron for fleece weight cut. His skirted show saddle for Canberra Royal 2020 (shown below), as a 6 year old animal, was an impressive 2.86 kg at 21 micron. You can expect an outstanding cria from this combination. Knowing the fleece weight that her joining sire will bring to the match, Zsa Zsa's excellent frame will prove to be a real asset.

Show Results

3rd Light Fawn Intermediate Female 2019 Victorian Colourbration Show

3rd Light Fawn Intermediate Female 2019 Winter Wonderland

2nd Light Fawn Intermediate Female 2019 National Show



A stunning female to add to your herd!

Patagonia—Reserved



Zsa Zsa 2nd fleece 2019



Absolut Temptation – 7th Fleece 2019

A perfect fusion of Snowmass and Celtic Triumph genetics

Grantham was the very first of our Snowmass Progeny to be born – so it is with mixed feelings that we offer this Elite Transcendence son for auction. At the moment, however, we have ‘an embarrassment of males’ for the size of our female herd. We have already mated him to a number of our own females and we know that Grantham, with his special fusion of genetics, has the potential to make a fantastic contribution to the herd of any breeder seriously looking to produce elite animals with the fleece characteristics sought by processors of our fibre.

Grantham’s fleece has a high frequency crimp and absolutely exquisite handle. His 4th fleece, still only 19.2 micron, was given full marks for handle when exhibited at the 2020 Canberra Royal Show. His handle comes not just from his sire but also his aptly named dam Celtic Gossamer, who has consistently produced outstanding progeny for us. Along with his elite fleece, Grantham carries the correct frame and masculine presence of his sire Elite Transcendence.

A male to take your herd into the future!

Patagonia—Reserved

Sire: [Snowmass Elite Legend W](#) [Patagonia Celtic Triumph W](#)
[ILR Snowmass Elite Transcendence W](#) Dam: [Patagonia Celtic Gossamer SLF](#)
[SPA Alpaca's Peruvian Sonnet W](#) [Jolimont Karly SW](#)

Fleece: Nov 2019 (4th) - M 19.2, SD 3.9, CV 20.2, SF 18.6, CF 99.6%, Cur 49.9



Show Results

Reserve Champion Adult Male – Hawkesbury Show 2019 3rd White Senior Male Victorian - Colourbration 2019 Champion Senior Male - Winter Wonderland 2019
 3rd White Senior Male Royal Melbourne 2019
 Reserve Champion Skirted Fleece 30 – 48 Months Royal Canberra 2020



Grantham 4th fleece 2019



Grantham 2nd fleece 2017

A fabulous fusion of Snowmass and Celtic Triumph genetics

Lot 72. Dural Reckless

Solid White Male

IAR: 210023 DOB: 16.08.19



Dural – Reserved



BlackGate Lodge SnowMaster SLF ForestGlen Stradivari SW
 Sire: Banksia Park Johny Depp SW Dam: Dural Clarabel SW
 Banksia park Treasure SW ForestGlen Columbine SW

Fleece: M 18.7, SD 3.4, CV 18.1, CF 99.7, CRV 45.5

Promising young male with great potential. His sire Johny Depp is also the sire of 2019 National Supreme. Reckless is bred with similar genetics, he carries a soft highly aligned dense fleece that carries into the extremities. He would be an asset to any breeding program. Offered with fertility guarantee.

Lot 73. Dural Colorado Girl

Solid White Female

IAR: 210010 DOB: 11.06.18



Dural– Reserved



BlackGate Lodge SnowMaster SLF Windsong Valley Avalanche SW
 Sire: Banksia Park Johny Depp SW Dam: Dural Collaroy Minty SWH
 Banksia park Treasure SW ForestGlen Columbine ET SW

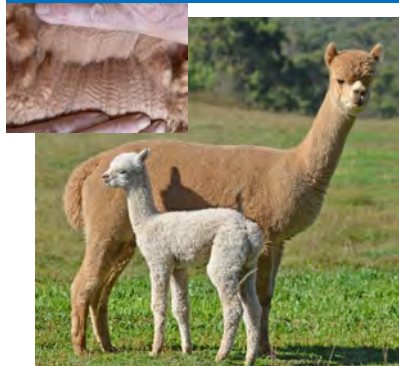
Mated: ForestGlen Stradivari, LMD 13.4.20
 Fleece: M 18.5, SD 3.7, CV 19.9, CF 99.7, CRV 45.2

Stylish young female, has the same sire as the 2019 National supreme. She has a soft handling, dense and lustrous, well aligned fleece. Pregnant to Stradivari who is a sire of champion and supreme winners. Colorado Girl would be a great addition to any breeding program.

Lot 74. Wirritin Cassia

Solid Med Fawn Female

IAR: 198644 DOB: 26.11.17



Wirritin Alpacas - Reserved

Glenavon Oliver SWT Morning Star Deep Blue MG
 Sire: Glenavon Rev SLB Dam: Vista Babazeeka Una SDB
 Glenavon Reigan SMB Morning Star Octavia RG

Mated: Open
 Fleece: Oct 19—M 22.6, SD 4.1, CV 18.1%, CF 95%

Cassia is a beautiful female with temperament to match. Her fleece is very dense with good style. She is halter-trained. Her sire was extremely successful in the show ring and her dam is high quality. Cassia's cria, born April 6, by Wirritin Princeton, is very promising, with a dense, stylish fleece with good extension.

Lot 75. Wirritin Sophie Dark Brown Female IAR: 198642 DOB: 08.11.17



Sire: Glenavon Oliver SWT Purumbete Inti SMF
Glenavon Rev SLB Dam: Benleigh Silver Cloud DG
Glenavon Reigan SMB Purumbete Angel WT

Mated: Wirritin Sarastro DG
Fleece: Oct 19—M 23.7, SD 5.1, CV 21.5%, CF 89.5%

Visitors here like Sophie's fleece best. She is an imposing animal with a very pretty, very dense, long, lustrous fleece with good style and good handle, better than stats suggest. She is halter-trained. Sire was very successful in show ring. Sophie is Silver Cloud's best cria.

Wirritin Alpacas – Reserved

Getting involved in this year's Breeders Choice Alpaca Auction

- Join Australia's Ag Sector
- Livestock Technology Sales Overcoming Distance
- Using Technology to Overcome COVID –19 Restrictions
- Flexibility to Operate From Wherever You Are
- 75 Lots Listed and Open for Bidding from 12 noon
- Easy to Bid—Join BCAA 2020 Online—with AuctionsPlus
- Flexibility to Bid on 1 Lot or all 75 Lots at any one time
- Easy to Track the Progress Bidding on Your Preferred Lots
- Bidding Accepted on any Lots from Start to Close of Auction
- Auction Closes only after all Bidding Ceases

***Technology, Online Sales—Allowing Buyers & Sellers Nationally to Connect.
Move The Alpaca Industry Forward in These Unique Circumstances.***

**Thankyou for your Bidding, Buying & Consideration at this Online
2020 Breeders Choice Alpaca Auction**

A Note From The Breeders...

Aingeal Ridge — Geoff & Jenni first established Aingeal Ridge Alpacas in 2005. We then downsized and now run a small herd at Bungendore NSW

Andache Alpacas — Andache Alpacas, owned by Angela & David Cheney, are one of the quiet achievers of the alpaca industry with exceptional results at the few shows they have attended. The foundation of the Andache herd was sourced from some of the best stock in the country. They are now producing a distinct quality lineage of their own.

Ashbourne Alpacas— Established in 2009 by Rebecca & Darren Hard. Starting small, we now run over 100 Alpacas on our beautiful property at Woodend, Victoria. For this auction we have entered Lots associated with Malakai Alpacas.

Aymara Alpacas— Established 1991, with purchasing the top priced lot at the 1st Alpaca auction in Australia. The following year sold top priced female at the Alpaca Classic Auction which became The National. Aymara has always used top genetics and breeds quality fawns.

Booyong Alpacas — Booyong Alpacas was established in 1997. We are colour breeders with strong grey genetics. Over the last 23 years we have won numerous ribbons at shows and also operated our own Alpaca Product Shop. Farm visits are welcome.

Coolawarra / Storybook Alpacas— Committed to the entirety of the Alpaca, the sustainability of Australian Agriculture, and passionate about the development of genetically bred champions. We are excited to be part of this wonderful industry now and ‘happily ever after!!!’.

Dural Park Alpacas — First established in 1993 in the heart of Dural, hence the name Dural Park Alpacas. The stud has since relocated to Meadow Flat and is now owned & run by Kurtis Parker.

Eaglewood Alpacas— Located at Murrumbateman and established since 2005. We aim to breed fine, well-grown alpacas that produce beautiful wool. Focus on whites & colours, especially greys. Eaglewood has enjoyed considerable success in the showing over the years. Recently added Sire ‘Vista Del Nunca’ to our herd —Supreme Champion Roan, 2017 Nationals.

EP Cambridge Alpaca Stud— Est. 1993. Grown to become Australia’s largest pedigree herd and a true international stud with operations in Europe and USA. Dedicated to the breeding of elite alpacas with next level fleece characteristics. We have recently imported some of the most renowned and prepotent males available from America— worthy additions to our stable of industry sires. We offer advanced fleeced animals with generations of predictable, proven genetics in every colour.

Everlast Alpacas— Boutique Stud based in Bowning NSW, where a combination of great genetics allows us to produce high quality and well framed animals. We focus on providing a range of colours that carry well established genetics.

Fern Tree Alpacas — Fern Tree Alpacas is a boutique Suri stud located on the lush Central Coast. Selecting for fleece quality & breeding soundness, focusing mainly on whites, but also some blacks and greys.

A Note From The Breeders...

Forestglen Alpacas— Established for over 20 years, located near picturesque Millthorpe in the high county of the NSW Central Tablelands, and run by 3 generations of the Carey/Staples family. We focus on white and fawn fleece production and have won Sydney Royal Supreme Fleece 8 times (most recently in 2017). We have twice sold elite medium fawn huacaya in the AAA National Auction. Stock offered in the BCAA represent an ideal opportunity to obtain our unique bloodlines.

Green Gully Alpacas—We started in 2005 and our love and fascination with these unique animals continues to grow. Our herd of 100 Huacayas thrives in the New England climate and we are proud of the quality of alpacas that we are producing and offering for sale. The ongoing health and wellbeing of our alpacas is most important to us, so we are very happy to provide ongoing advice and support.

Grey Gum Alpacas— Grey Gum Alpacas was established 20 years ago and has based its genetics on EP Cambridge Bloodlines. Our alpacas have great depth in their family tree.

Hunter Alpaca Stud — Since 1994, predominantly specialising in whites, but have not overlooked the colour genetics. Bloodlines obtained direct from South America, has added elite advancement to our herd. Producing solid correct framed alpacas, carrying extremely bright higher-yielding fleeces, showcased by long stapled of highly aligned uniform crimp, but maintaining fineness with minimal primary fibre. Focused, we continue to achieve results for both our animals & fleeces.

Jandarra Alpacas— A boutique award winning stud located at Pambula, south coast of NSW. Jandarra's show successes at the highest level come from a small herd of elite breeding females entwining Australia's best bloodlines.

Kurrawa Alpacas — Kurrawa Alpacas (Est. 1990) is a family owned and operated Alpaca Stud. We have focused on the breeding & development of our alpaca herd, huacaya and suri since then, to generate and produce the best quality possible. Our aim, to continue to produce high quality alpacas with reliable genetics, correct conformation and a commercially viable fleece.

Lillyfield Alpacas—Breeding Generations of Champions with long term fineness, commercial fibre length, great capacity & substance of bone. Focusing on fawns but excelling in breeding exceptional whites.

Malakai Alpacas — Owned and managed by Shane Carey since 1996 and located at Miners Rest, Victoria. Producing advanced fibre alpacas by remaining focused on our breed criteria. Long term successful breeders, we are honoured to offer our genetics for sale at this auction.

Mapa Alpacas— Establish in 2016 and young to the industry, however growing in size quickly We run a Q alpaca herd in NSW and use well known genetics from Australia wide. Producing mostly for White and Light Fawn, however some quality coloured stock.

Monga Alpacas— Most successful fleece exhibitor Canberra, 3 years running. Now offering stock from our elite fleece genetics.

A Note From The Breeders...

Patagonia Alpacas—Since 1996, our quest at Patagonia has been to breed to ultimate elite Australian alpaca. With alpaca fleece positioned as a luxury natural fibre, we realise the importance of focusing on the key attributes that reinforce this positioning—high lustre, softness and silky soft handle. In our breeding program we select for high fleece weights, strong crimp definition, ultra-soft handle, long fibre length and lustre. To further our path towards breeding elite Australian seedstock alpacas, we have invested significantly over the past few years in importing unique genetics from Snowmass Alpacas—arguably one of the best breeders in the United States. We now have progeny from both our 2015 and 2017 shipments and are very excited about the results we are getting from using our range of Snowmass males over our Celtic Triumph females.

Rugosa Park— Established in 2006, we had the advantage of starting with already advanced breeding stock. We continue to carefully select for fine, dense, long stapled & robust alpacas suitable for commercial quality fleece production.

Signature Alpacas— 17 years of breeding predominantly white lines focused on low SD, length, uniformity defined crimp and fineness. These clean genetics on a correct frame remain for the life of the alpaca and are passed onto the next generation.

Walkley Fields— Specialising in White & Fawn alpacas. In operation for almost a decade, Walkley Fields has carefully selected unique genetics to establish the core of our elite breeding herd. Our strategy is focused on the collection of scientific data, shearing results & establishing the pre-potency of traits for each individual animal. Situated at properties located at the foothills of the Blue Mountains & Meadow Flat, just west of the Great Dividing Range.


Wirritin Alpacas—Susan and Royall Tyler bought their first alpacas in late 1993 and operated as Morning Star Alpacas for many years until moving to a new herd name—Wirritin Alpacas—in 2014. We have a small group of mostly older females and produce a few cria's a year.

Yaringa Alpacas—Yaringa Alpacas is owned by Susan Haese & located on South Australia's picturesque Fleurieu Peninsula. Yaringa is one of the best-recognised breeders of both white & coloured alpacas in Australia with an enviable show record. We are excited to be included in the 2020 BCAA live auction.



Breeders Choice Alpaca Auction
Become a Vendor in 2021
All Breeders Welcome.
There is no selection committee—it's your auction.
Contact - prnrtulip@outlook.com Ph: 0412 496 520

World of **ALPACAS**

A photograph of an older man with grey hair, wearing a dark suit and a white shirt, smiling warmly. He is holding a white alpaca close to his face. The background is slightly blurred, showing what appears to be an indoor setting with other people in the distance.

World of Alpacas
is a high quality
publication produced
biannually with a
mission to promote the
Alpaca Industry not
only in Australia but
world wide.

Promotion, education
and passion for Alpacas

worldofalpacas.com

Breeders Choice Alpaca Auction

Auction—Saturday 18th July 2020

Mail : PR & NR Tulip

537 Louth Park Rd

East Maitland...NSW ...2323

Ph: 0412 496 520

www.hunteralpaca.com.au

**POSTAGE
PAID
AUSTRALIA**